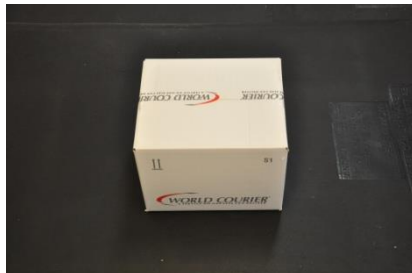


Packing Instruction

This guideline turns to shippers packing Biological Substances classified as Category A, B or Exempt. The information in this guideline is collected from World Courier's experience and IATA's (International Air Transport Association) packing instructions 650 and 602. At pick up, World Courier will bring IATA approved packaging material and required amount of Dry Ice when frozen samples are sent. The absorbent material must if leakage occurs be able to absorb the entire amount of fluid sent in the vials. There are three sizes of absorbent material; 8x10 cm can absorb 50ml of liquid; 15x10 cm can absorb 100ml of liquid; 30x10 cm can absorb 250 ml of liquid. Please observe that no more than 50g/50ml of samples can be sent when using PI 602.

Box	External dimensions	Internal dimensions
S1	32x27x24 cm	25x20x14,5 cm
S2	44x39x35 cm	35x30x25 cm
S3	58x49x42 cm	32x27x19 cm
Pathopak	29x19x10 cm	29x19x10 cm

**S1****S2****S3****Pathopak**

Packing Instruction for S1, S2 and S3 (IATA PI 650)

①

Sample box, absorbent material and two different bags.



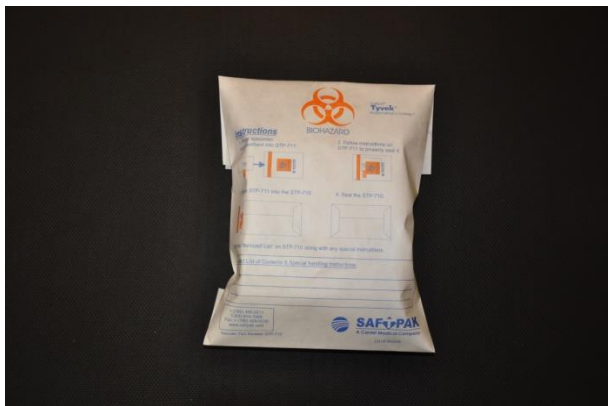
②

Place the absorbent material and sample box into the transparent bag and seal it.



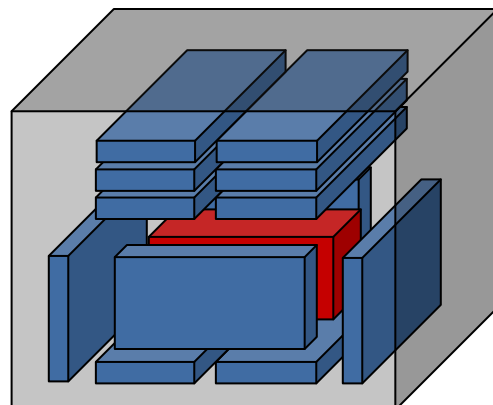
③

Place the transparent bag into the white bag and seal the white bag.



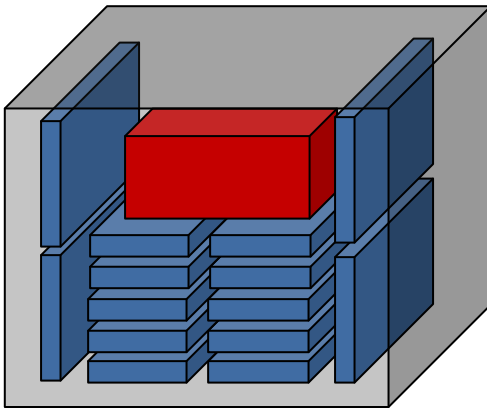
④

Place the white sample bag (illustrated in red) into the Dry Ice (illustrated in blue) as the picture below. Place one layer of Dry Ice on the bottom and sides and the rest of the Dry Ice on top of the sample bag.



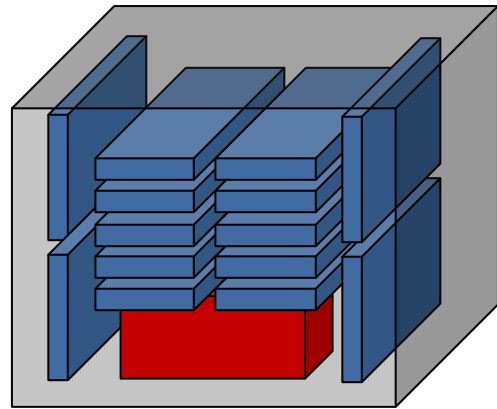
5

Below is an example of an incorrectly placed sample bag.



6

Below is an example of an incorrectly placed sample bag.



Packing Instruction for Pathopak (IATA PI 602)

①

Product box, absorbent material, bio-pouch, etiquettes and fiberboard box.



②

Place the absorbing material and the product box into the Bio-Pouch and seal it.



③

Place the Bio-Pouch into the Pathopak and close the lid.



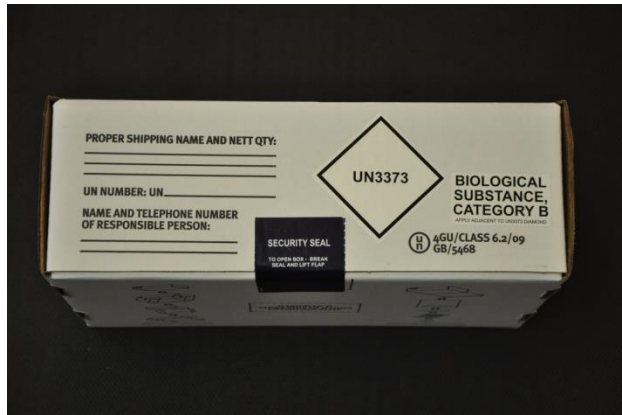
④

Below is a closed Pathopak.



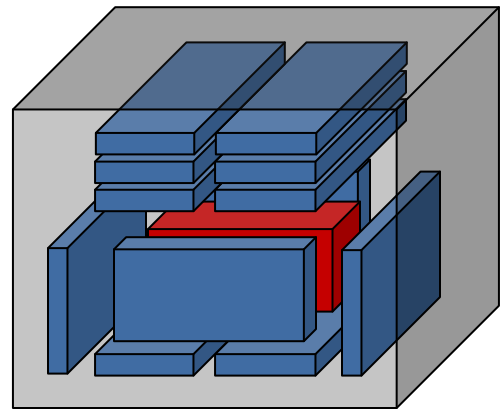
⑤

Stick the blue label on top of the text "Affix Security Label Here". Affix the "UN 3373" and "Biological Substance" labels as the picture below. Also write name and phone number to the person responsible for the shipment



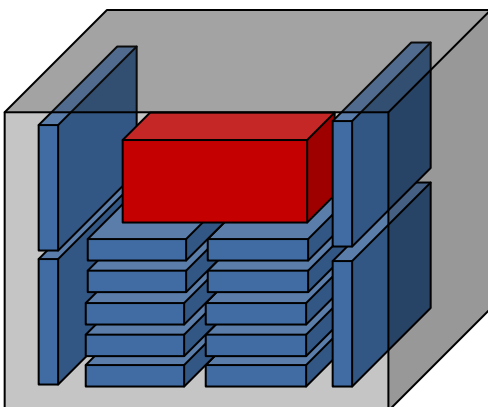
⑥

Place the Pathopak (illustrated in red) into the Dry Ice (illustrated in blue) as the picture below. Place one layer of Dry Ice on the bottom and sides and the rest of the Dry Ice on top of the Pathopak.



⑦

Below is an example of an incorrectly placed Pathopak.



⑧

Below is an example of an incorrectly placed Pathopak.

