

Call for operational support for core facilities 2025–2028

The call is aimed broadly at
current and future core
facilities within KI and
Region Stockholm.

Grants can only be applied for by core facilities that charge user fees.

In general, the core facility manager can apply for an operating grant for four years.

The call opens at **February 26, 10 am** and closes at **April 9, 2 pm 2024**.

The application is written in Swedish or English.

News in this call

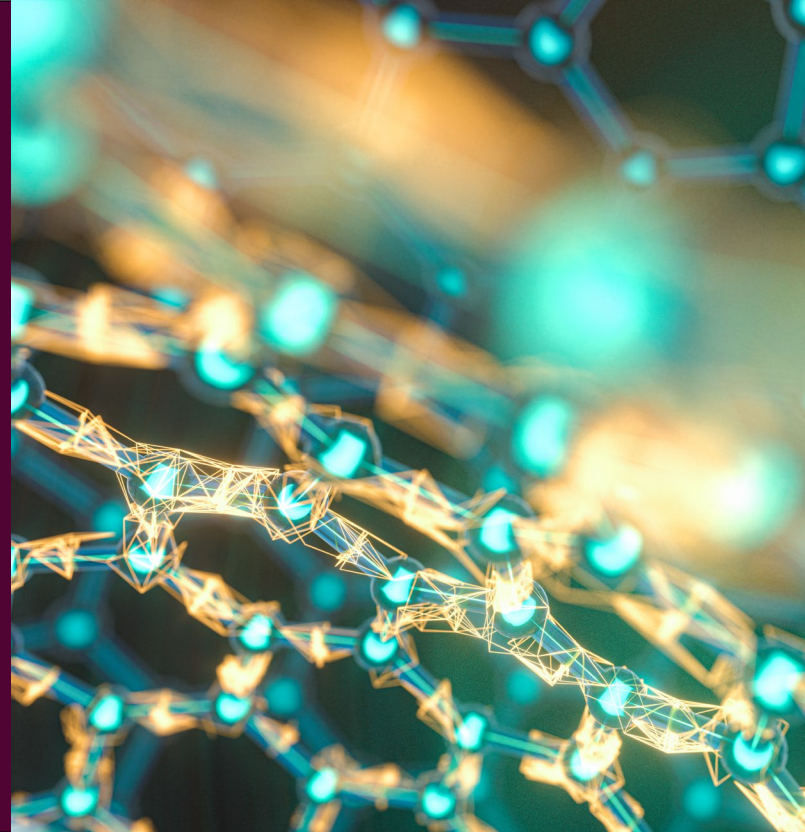
- Some flexibility in grant period and possible adjustment of the grant level after two years.
- Funds for depreciation of instruments are applied for as part of the operating support.
- Resources for co-financing national infrastructures are not covered by the call.

Activities 2022 – 2024

- **Methods and techniques** provided as a service during the current period and their use at an overall level.
- **Scientific deliverables.** What is reported should give a representative picture of the activities. Select a maximum of **ten** scientific articles that specifically indicate the contribution to research within KI/Region Stockholm. Any co-authorship from the core facility must be justified.

Scientific deliverables

- 10 most important articles should be selected
- The number of publications is not critical
- The facilities are diverse and the aim and the support varies



Strategic importance of the core facility for KI–Region Stockholm:

Describe the strategic importance of the core facility for research at KI and Region Stockholm and what this judgement is based on.

Technologies and methods:

Describe the technologies and methods proposed to be provided as a service during the period covered by the application. How is continuous technology and method development as well as competence and knowledge building ensured?

Future activities

User data:

Delineate future users and the basis for this estimation.

Similar service at another facility:

Describe whether the need addressed in the application corresponds to similar service provided in another way to researchers at KI/Region Stockholm. How is any overlap minimized? Duplication of activities at several geographical nodes must be specifically justified.

Coordination:

Describe, where applicable, the coordination with core facilities that provide similar services within KI – Region Stockholm, nationally and internationally.

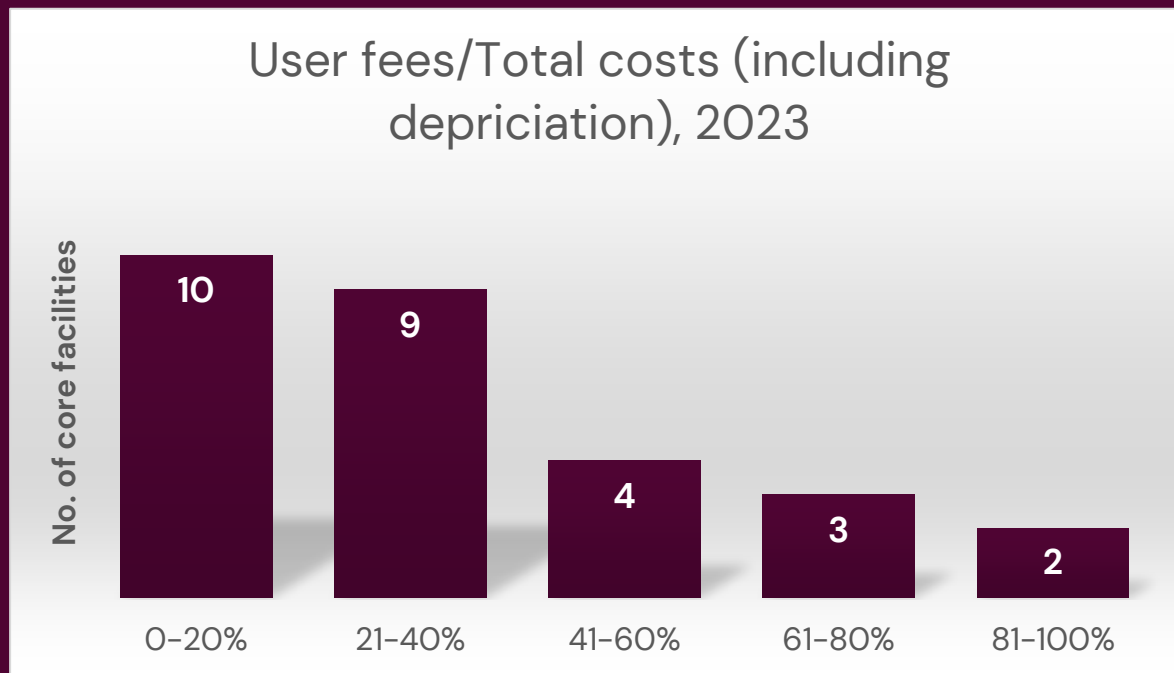
Goals:

Specify goals for the core facility for the period covered by the application and three goals to follow up in the fall of 2026.

User fees:

Explain the basis for deciding user fees. List fees for services to be provided and give example(s) of the proportion of the actual cost paid by the user.

- User fees are a priority for the infrastructure board.
- Important with an increasing trend over time.
- The facility's self-evaluation is important.



Future activities

Prioritization:

Explain how prioritization between users will be done.

Communication/Information:

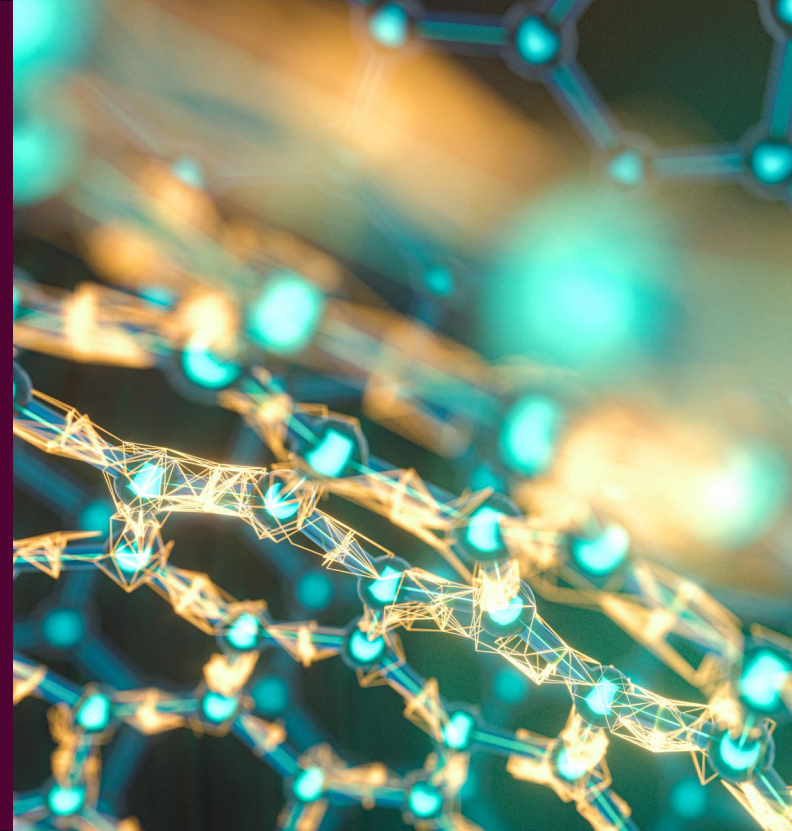
Describe how the core facility will communicate its activities.

Training:

Describe how the core facility plans to participate in training within and possibly outside KI/Region Stockholm.

Budget

In general, a core facility will receive support at the current level if the facility has not clearly broadened the services provided.



Budget template

Download template [here](#)

Budget 2025-2028	2025	2026	2027	2028
INTÄKTER				
Årets budgeterade ingående balans (Här rapporteras balansposter, t ex oförbrukade bidrag, myndighetskapital föreg år mm. OBS! EJ anläggningstillgångar.)	0	0	0	0
Sökt core-facilitetsstöd - drift (CF) :	0	0	0	0
Totala användaravgifter (externa och interna)	0	0	0	0
Externa intäkter (ej användaravgifter)	0	0	0	0
Övriga interna intäkter (ej användaravgifter)	0	0	0	0
SUMMA INTÄKTER	0	0	0	0
Summa användaravgifter/totala kostnader (%)	#DIV/0!	#DIV/0!	#DIV/0!	#DIV/0!
Summa användaravgifter/totala kostnader exkl. avskrivningar (%)	#DIV/0!	#DIV/0!	#DIV/0!	#DIV/0!
Sökt core-facilitetsstöd/totala intäkter	#DIV/0!	#DIV/0!	#DIV/0!	#DIV/0!
KOSTNADER				
Kostnader för personal	0	0	0	0
Kostnader för lokaler	0	0	0	0
Övriga driftskostnader	0	0	0	0
Finansiella kostnader	0	0	0	0
Avskrivningar	0	0	0	0
TOTAL SUMMA KOSTNADER	0	0	0	0
SALDO INTÄKTER-KOSTNADER	0	0	0	0
KVAR ATT DISPONERA	0	0	0	0

Clarification of budget items

Justify budget items broken down into:

- Personnel (specify roles)
- Other operational costs
- Depreciation

Motivate what is planned to be financed with user fees and what is proposed to be financed from the current call.

Justify the level of user fees as proportion of the total cost of the activities.

Justify any incoming balance.

Opportunity for questions



Karolinska
Institutet

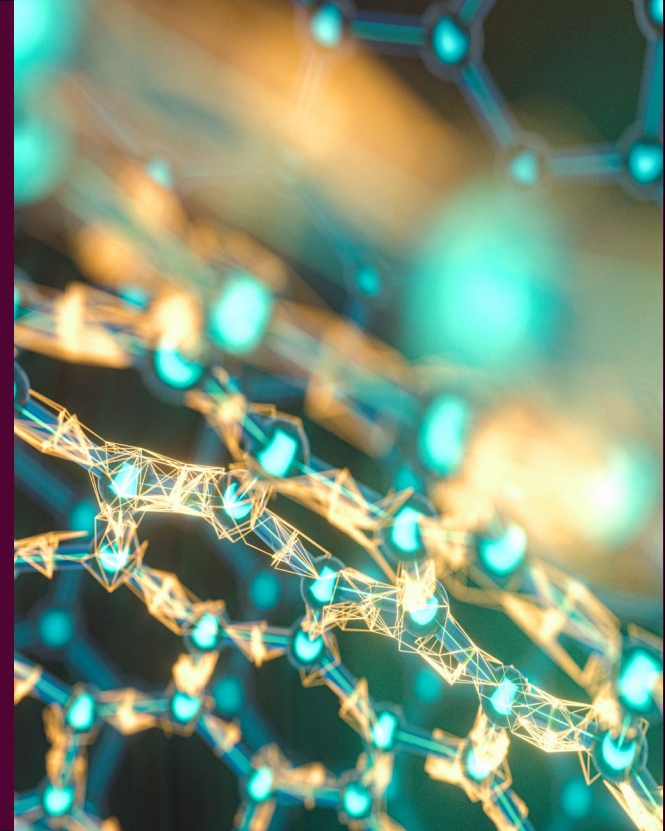
Region Stockholm

Zoom meeting March 13 at 3-4 pm for questions regarding the call.



Assessment

1. Performance during the current grant period
2. Strategic importance for research within KI/Region Stockholm
3. Service at the technological/methodological forefront
4. Documented need including number of unique users
5. Basis for user fees
6. Coordination between core facilities
7. Future plan that includes clear goals that can be followed up.



Decision



Karolinska
Institutet

 Region Stockholm

Decision on the allocation of funds will be taken in
September 2024 by the Infrastructure Board.



Welcome to apply!

Questions: spocinfrastructure@ki.se