



Karolinska
Institutet

Marie Skłodowska–Curie Actions Postdoctoral Fellowships 2024 Information seminar

27 March, 2024

Ying Zhao, PhD

Research Support Office, Karolinska Institutet



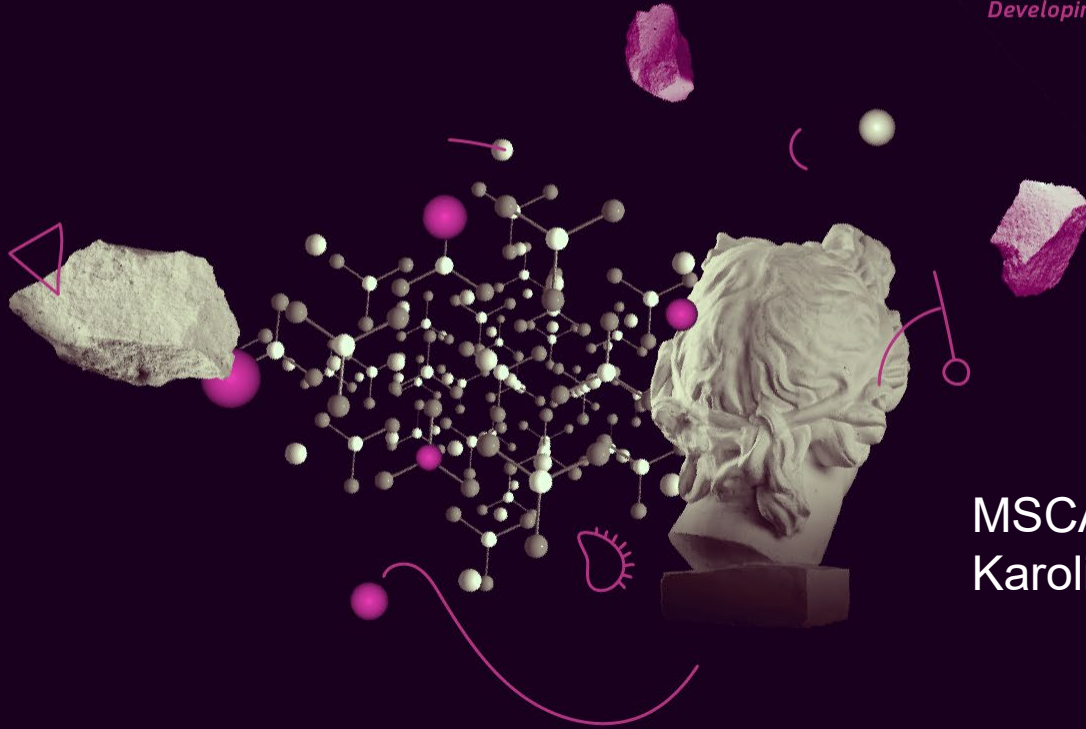
Agenda

- 10:30 – 11:00
EU Framework Program: Political Objectives of MSCA.
Isabel Dellacasa Lindberg, National Contact Point MSCA Sweden, The Swedish Research Council (Vetenskapsrådet)
- 11:00 – 11:45
Eligibility, Budget, Application support at KI.
Ying Zhao, MSCA Grant Advisor, KI Grants Office
- 11:45 – 12:00 **Questions**

MSCA

Marie Skłodowska-Curie Actions

Developing talents, advancing research



MSCA-PF 2024
Karolinska Institutet

Shared role between the Swedish Research Council (SRC , Vetenskapsrådet) and Vinnova

Isabel Dellacasa Lindberg, Swedish Research Council

- Coordinating MSCA NCP
- Main responsible for MSCA-PF, MSCA-DN

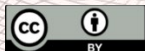
Erik Litborn, Vinnova

- Main responsible for COFUND and SME-participation
- MSCA-NCP throughout H2020

#MSCA #HorizonEU

@MSCActions

<https://ec.europa.eu/research/mariecurieactions/>



© European Union 2021

Unless otherwise noted the reuse of this presentation is authorised under the [CC BY 4.0](https://creativecommons.org/licenses/by/4.0/) license. For any use or reproduction of elements that are not owned by the EU, permission may need to be sought directly from the respective right holders. Image sources: [iStockphoto.com/Unsplash](https://www.istockphoto.com/)

Want to know more?

Check the [Marie Skłodowska-Curie Actions' website](#) to explore all the opportunities offered by the programme



The [European Research Executive Agency](#) (REA) manages the MSCA on behalf of the European Commission

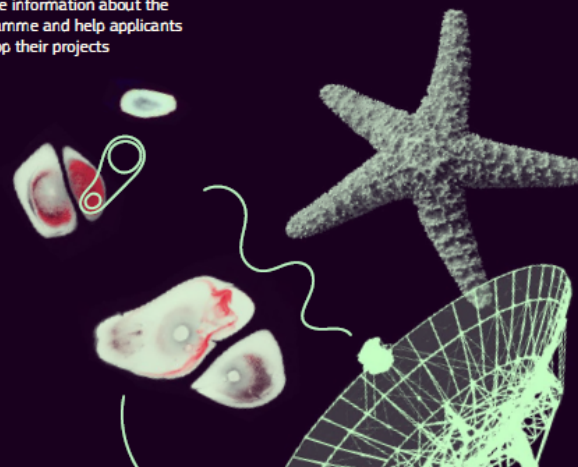


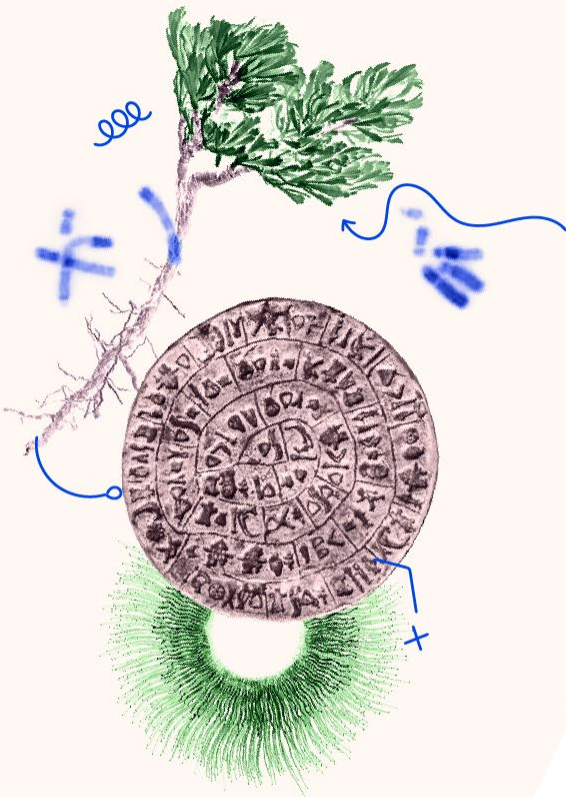
[MSCA National Contact Points](#) provide information about the programme and help applicants develop their projects

[Euraxess](#) provides support services to professional researchers, including hosting offers, PhD and postdoctoral job postings funded by the MSCA



The [Marie Curie Alumni Association](#) is the programme's global network of former MSCA fellows, with an increasing community of over 20000 members





Agenda

- General introduction to MSCA
 - ✓ Underlying principles

- MSCA-PF programme and calls
 - ✓ Overview – **indicative!**

The European framework programme (2021 - 2027)

HORIZON EUROPE

EURATOM

SPECIFIC PROGRAMME: EUROPEAN DEFENCE FUND

*Exclusive focus on
defence research
& development*

Research
actions

Development
actions

SPECIFIC PROGRAMME IMPLEMENTING HORIZON EUROPE & EIT

Exclusive focus on civil applications



Pillar I
EXCELLENT SCIENCE

European Research Council

Marie Skłodowska-Curie

Research Infrastructures



Pillar II
GLOBAL CHALLENGES &
EUROPEAN INDUSTRIAL
COMPETITIVENESS

Clusters

- Health
- Culture, Creativity & Inclusive Society
- Civil Security for Society
- Digital, Industry & Space
- Climate, Energy & Mobility
- Food, Bioeconomy, Natural Resources, Agriculture & Environment

Joint Research Centre



Pillar III
INNOVATIVE EUROPE

European Innovation
Council

European innovation
ecosystems

European Institute of
Innovation & Technology*

WIDENING PARTICIPATION AND STRENGTHENING THE EUROPEAN RESEARCH AREA

Widening participation & spreading excellence

Reforming & Enhancing the European R&I system

Fusion

Fission

Joint
Research
Center

* The European Institute of Innovation & Technology (EIT) is not part of the Specific Programme

Work programme 2023-2024

The spring update of the main Horizon Europe Work Programme 2023-2024 was adopted by the Commission on 6 December 2022, with the official reference C(2022)7550.

https://ec.europa.eu/info/funding-tenders/opportunities/docs/2021-2027/horizon/wp-call/2023-2024/wp-2-msca-actions_horizon-2023-2024_en.pdf



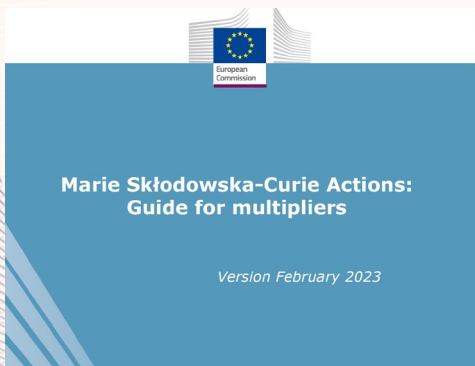
EN

Horizon Europe
Work Programme 2023-2024

2. Marie Skłodowska-Curie Actions

(European Commission Decision C(2022)7550 of 6 December 2022)

MSCA actions



<https://marie-sklodowska-curie-actions.ec.europa.eu/document-library/>

[Home | Marie Skłodowska-Curie Actions \(europa.eu\)](#)

The MSCA have **5** main actions

Doctoral Networks

implement doctoral programmes (including joint doctorates and industrial doctorates) **by international partnerships** of organisations from different sectors. They train highly-skilled doctoral candidates, stimulate their creativity, enhance their innovation capacities and boost their employability in the long-term.

Postdoctoral Fellowships

support researchers' careers and foster excellence in research and innovation. Researchers holding a PhD can carry out their research activities, acquire new skills and develop their careers abroad, whilst developing competences in non-academic sectors and working within interdisciplinary teams.

Staff Exchanges

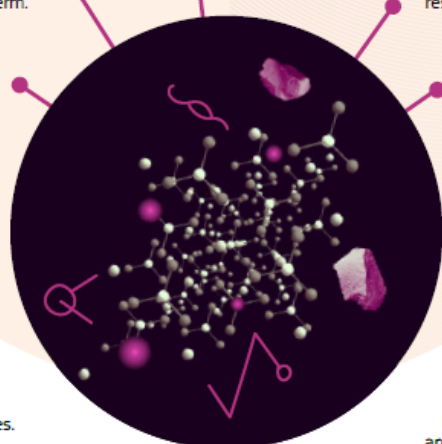
encourage short-term international and inter-sectoral exchanges of research and innovation staff through sustainable, collaborative projects in Europe and beyond. By doing so, they enhance knowledge and skills transfer and increase organisations' research and innovation capacities.

MSCA and Citizens

brings research and researchers closer to children, families and the public at large through the European Researchers' Night - the annual research communication and promotion event taking place at the end of September across EU Member States and Horizon Europe Associated Countries.

COFUND

co-finances regional, national and international doctoral and postdoctoral programmes for researchers' training and career development. The COFUND action spreads MSCA's best practices by setting high standards and excellent working conditions, and boosts training and international, interdisciplinary and inter-sectoral mobility.



Indicative launch and deadline of 2024 calls

MSCA calls 2023	Call launch	Submission Deadline
Postdoctoral Fellowships	10 April (indicative)	11 September (indicative)
Doctoral Networks	29 May (indicative)	27 November (indicative)
COFUND	8 October 2023 (indicative)	6 February 2025 (indicative)
Staff Exchanges	10 October 2023 (indicative)	5 March 2025 (indicative)

<https://marie-sklodowska-curie-actions.ec.europa.eu/funding?>

The scientific panels

The 8 scientific panels are:

- Chemistry (CHE)
- Social Sciences and Humanities (SOC)
- Economic Sciences (ECO)
- Information Science and Engineering (ENG)
- Environment and Geosciences (ENV)
- Life Sciences (LIF)
- Mathematics (MAT)
- Physics (PHY)

Applicants must indicate at the submission stage in which of the eight different scientific areas their proposal fits best.

All fields of
research and
innovation
(bottom up
principle)

Evaluation

Evaluation of Marie Skłodowska-Curie Actions (MSCA)

REA – European Research Executive Agency



Each panel is overseen by a panel Chair and vice-chairs

An independent observer is appointed by the REA to observe the overall evaluation process

Succes rate 2023 call

REA received 8,039 applications for this call, **15.8%** of which were selected for funding

1,110 researchers through **European Postdoctoral Fellowships**

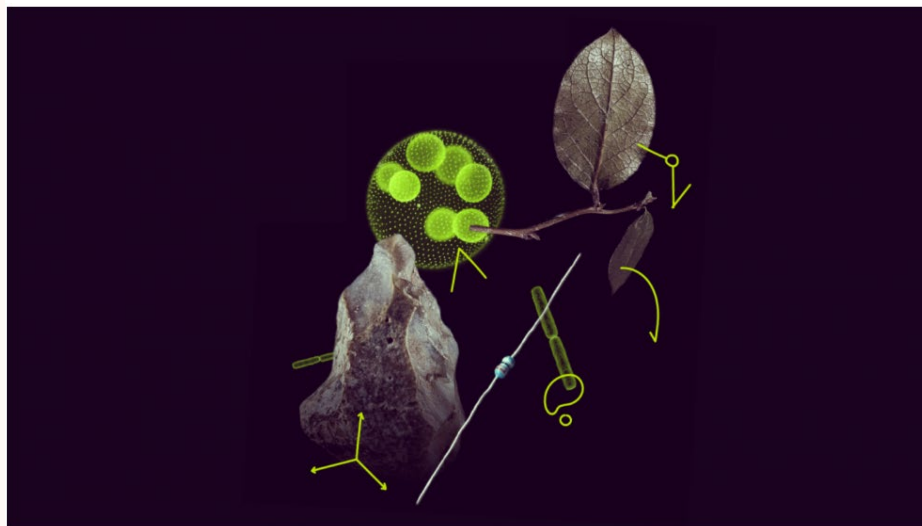
139 researchers through **Global Postdoctoral Fellowships**

<https://marie-sklodowska-curie-actions.ec.europa.eu/news/marie-sklodowska-curie-actions-award-eu260-million-to-postdoctoral-researchers-in-2023>

Published: 13 Feb 2024

Marie Skłodowska-Curie Actions award €260 million to postdoctoral researchers in 2023

1,249 experienced post-doctoral researchers were selected for funding among 8,039 applicants.



Allowances

Country Coeff code (CCC)
Sweden 1,254

MSCA Postdoctoral Fellowships

Contributions for recruited researchers Per person-month					Institutional unit contributions Per person-month	
Living allowance	Mobility allowance	Family allowance (if applicable)	Long-term leave allowance (if applicable)	Special needs allowance (if applicable)	Research, training and networking contribution	Management and indirect contribution
EUR 5 080	EUR 600	EUR 660	EUR 5 680 x % covered by the beneficiary	Requested unit' x (1/number of months)	EUR 1 000	EUR 650

* A country correction coefficient applies to the living allowance in order to ensure equal treatment and purchasing power parity for all researchers

The information in this presentation is preliminary and subject to the adoption of the work programme

Unit contributions

- Defined cost categories, fixed amounts per month
- Reimbursement based on activity per month
- **No audit on actual costs**
- **Audit on formalities e.g. eligibility**

Unit costs

Living allowance

contribution to salary costs (fellow)

Mobility allowance

contribution to private costs (fellow)

Family allowance

contribution to private costs (fellow), marriage, relationship with equivalent status as marriage (sambo), dependent children, flexibility during the action

Long-term leave all.

contributes to the beneficiary's pay obligations, longer than 30 consecutive days

Special needs allowance

contributes to additional costs for researchers with disabilities (lump sum)

RTN allowance

contribution to costs for activities in project description

Management and OH

fixed amount (some co-funding might be required)

Guide for applicants MSCA-PF

❑ Specific Guide for Applicants (GfA)

[Guide for applicants - MSCA PF 2023.pdf \(europa.eu\)](#)

**Re-submission restriction
Score <70%
cannot submit following
year with same host and supervisor**

**Early contact with the beneficiary
Research Support Office!**



Horizon Europe Programme

Guide for Applicants

Marie Skłodowska-Curie Actions – Postdoctoral Fellowships (PF)

Version 2.0 – 2023
11/04/2023

Disclaimer

This guide aims to support potential applicants to the PF 2023 call. It is provided for information purposes only and is not intended to replace consultation of any applicable legal sources. Neither the European Commission nor the European Research Executive Agency (or any person acting on their behalf) can be held responsible for the use made of this guidance document. Note that the guidance provided in the Annotated Model Grant Agreement shall prevail in case of discrepancies.



European Charter for Researchers and the Code of Conduct for the Recruitment of Researchers

☐ MSCA is committed to the charter
[am509774CEE_EN_E4 \(europa.eu\)](https://am509774CEE_EN_E4.europa.eu)





Gender in Horizon Europe

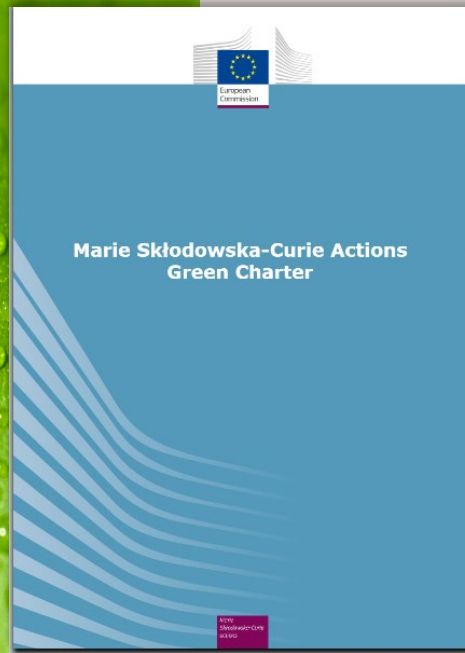
Gender Equality Plans as an eligibility criterion in Horizon Europe

Eligibility criterion for all public bodies, higher education institutions and research organisations from EU Member States and associated countries wishing to participate in Horizon Europe

[Official Frequently Asked Questions](#)

- ✓ a requirement by default
- ✓ an award criterion evaluated under the excellence criterion, unless the topic description explicitly specifies otherwise
- ✓ not new to MSCA

MSCA Green Charter



Horizon Europe Work Programme:

“All MSCA-funded projects are encouraged to address the principles of the MSCA Green Charter and implement measures to minimise the environmental footprint of their activities”.

<https://ec.europa.eu/research/marie-curieactions/green-charter>

- ✓ streamlined across all actions in the future
- ✓ Applicants have the chance, not the obligation, to outline how they intend to adhere to the MSCA Green Charter
- ✓ this question was **not** used by experts in the 2023 year’s evaluation
- ✓ May be included in the 2024 (indicative)

EU's open science policy

Open Research Europe

https://research-and-innovation.ec.europa.eu/strategy/strategy-2020-2024/our-digital-future/open-science_en



Enables researchers to publish any research they wish to share, supporting reproducibility, transparency and impact.



Uses an open research publishing model: publication within days of submission, followed by open invited peer review.



Includes citations to all supporting data and materials, enabling reanalyses, replication and reuse.

European Open Science Cloud (EOSC)

<https://eosc-portal.eu/>

Responsible Research & Innovation (RRI)

[Strategic plan 2020-2024 – Research and Innovation | European Commission \(europa.eu\)](https://research-and-innovation.ec.europa.eu/strategy/strategy-2020-2024/our-digital-future/open-science_en)

RRI principles horizontally integrated

<https://op.europa.eu/en/publication-detail/-/publication/ee9bacdf-fdad-46eb-8cd8-32879e310191/language-en>

MSCA-NET Open Science and FAIR

https://horizoneuropencpportal.eu/sites/default/files/2023-04/task-3.6-open_science_brief.pdf



Categories for participation in MSCA

**Member States (MS)
or
Horison Europe
Associated countries
(HE AC)**

Third countries (TC)

Entities

Academic



Non-academic



Industry (SME)



Post Doctoral Fellowship – mono beneficiary (European Fellowship)

Open for world-wide fellows
i.e. MS, HE-AC
or TC



European Postdoctoral Fellowships (EF)

✓ coming to Europe from any country in the world or moving within Europe

✓ 12-24 months

Up to 1/3 of standard duration

Optional

Secondment



MS, HE-AC or TC

Additional 6 months

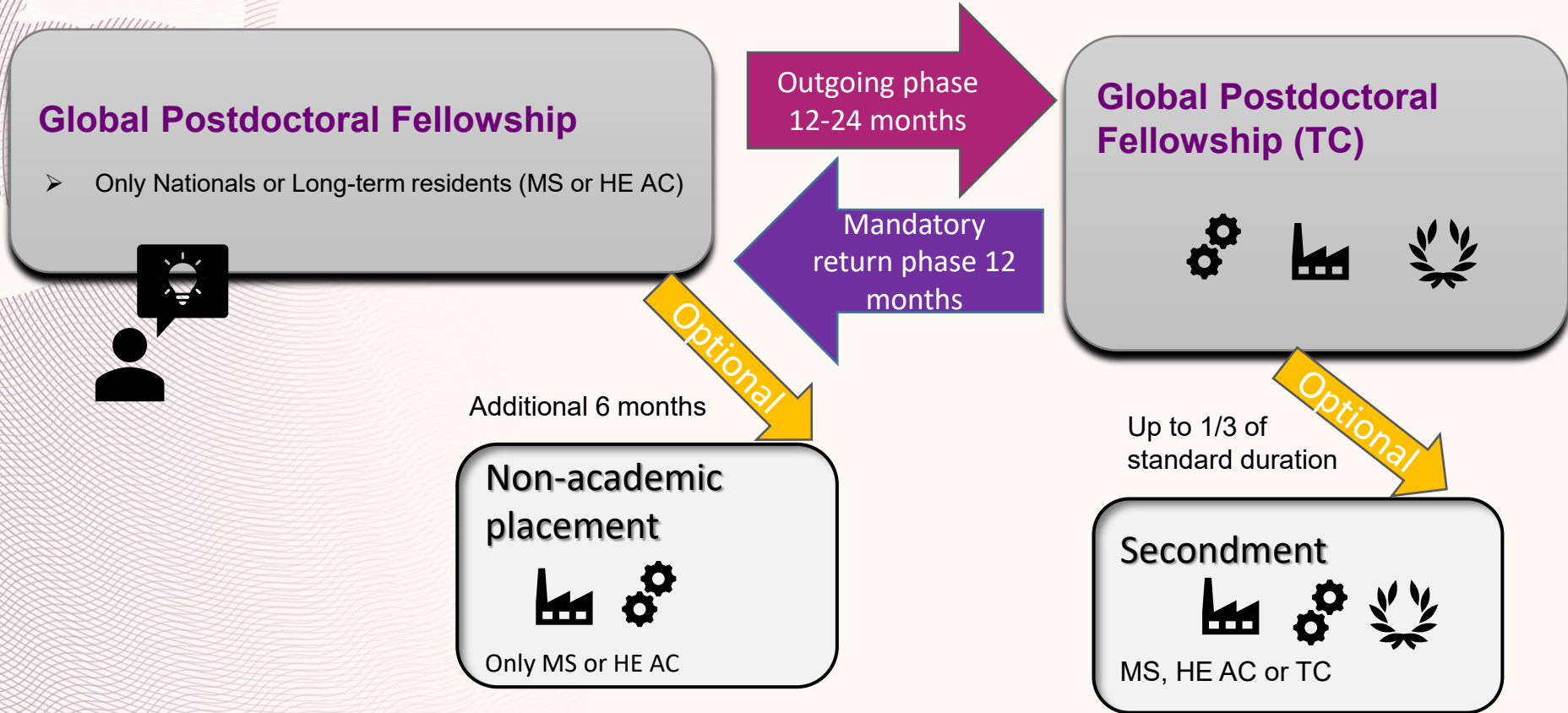
Optional

Non-academic placement



Only in MS or HE-AC

Post Doctoral Fellowship – mono beneficiary (Global Fellowship)



Post Doctoral Fellowship – eligibility

Possession of a PhD at call deadline *i.e.*

successfully defended not formally awarded (**cannot be conditionally awarded!**)

Up to 8-years research experience after PhD

8-year rule

Not resided/main activity in the country of beneficiary (EF)

➤ MS or HE-AC

or **host organisation (GF)**

➤ TC

for more than 12 months in the 36 months before deadline

Mobility rule

Post Doctoral Fellowship

- ❑ May include **secondment** in any country world-wide

- **European Postdoctoral Fellows**

- ✓ Cannot exceed 1/3 of the standard duration (12-24 months)
- ✓ Should be in line with project objectives adding significant value and impact

- **Global Postdoctoral Fellows**

- ✓ Up to 1/3 of out-going phase not in the 12 months mandatory return-phase.
- ✓ Can take place at the start of the action before the out-going phase for a maximum of 3 months (included in the 1/3 of maximum duration).

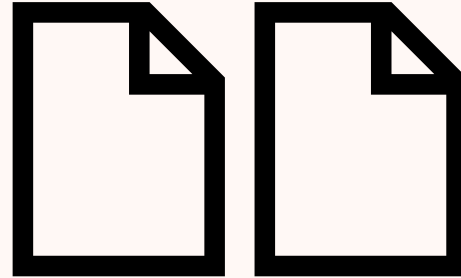
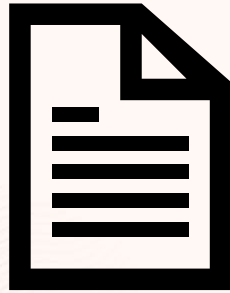
- ❑ May include a **non-academic placement**

- Additional period up to 6 months directly after the end of the fellowship
- Only in non-academic sector in MS or HE AC.
- Integral part of the proposal added value for project and career-development.
- **No Letter of Commitment- Indicative!**
- **Optional**, evaluated if included but not penalised if not included.

Part A and Part B1 & B2

Administrative part

Narrative part



Part A

Part B1 and B2



Significance of the evaluation criteria

All criteria matters!

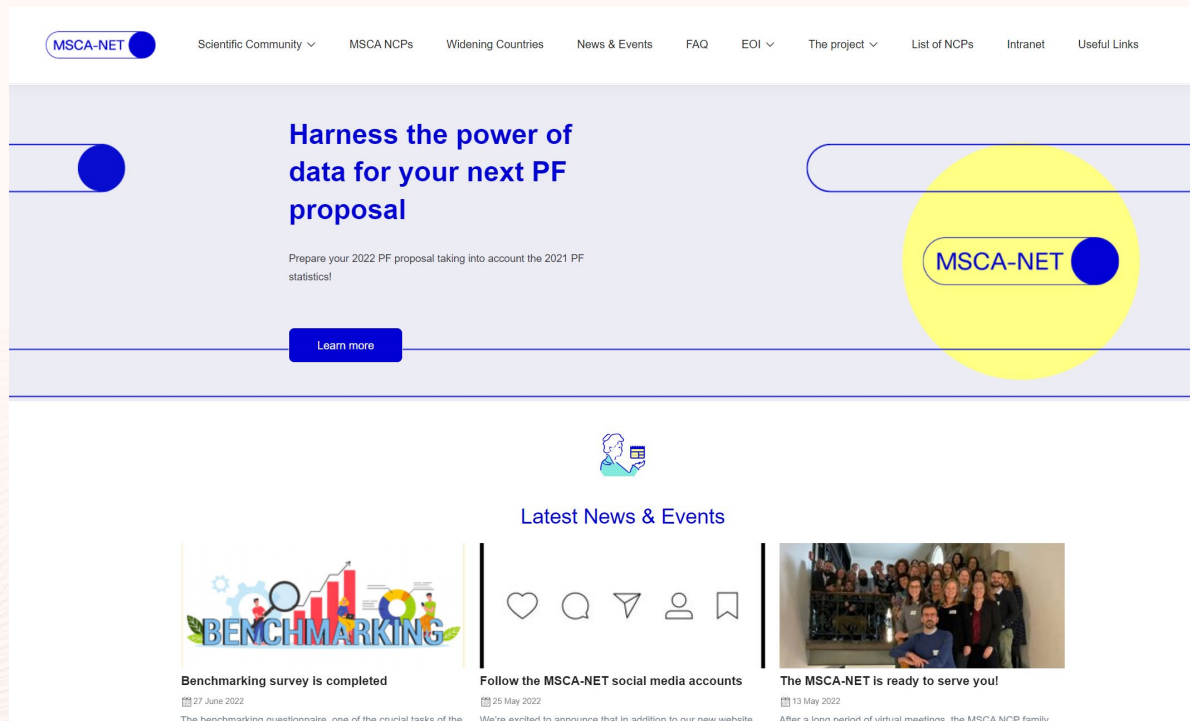
Page 100-101 in work programme



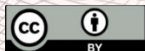
Excellence	Impact	Quality and efficiency of the implementation
Quality and pertinence of the project's research/innovation objectives (and the extent to which they are ambitious, and go beyond the state of	Developing new and lasting research collaborations, achieving transfer of knowledge between participating organisations and contributing to improving research and	Quality and effectiveness of the work plan, assessment of risks, and appropriateness of the effort assigned to work packages
50%	30%	20%
Weighting		

MSCA-NET project

[Home Page - MSCA-NET](#)



The screenshot shows the MSCA-NET project website. The header includes the MSCA-NET logo and navigation links: Scientific Community, MSCA NCPs, Widening Countries, News & Events, FAQ, EOI, The project, List of NCPs, Intranet, and Useful Links. The main banner features a blue circle on the left and a yellow circle on the right, both containing the MSCA-NET logo. The central text reads: "Harness the power of data for your next PF proposal". Below this, it says: "Prepare your 2022 PF proposal taking into account the 2021 PF statistics!" and a "Learn more" button. The "Latest News & Events" section contains three items: 1. "Benchmarking survey is completed" (27 June 2022) with an icon of a bar chart and the word "BENCHMARKING". 2. "Follow the MSCA-NET social media accounts" (25 May 2022) with icons for heart, comment, location, person, and bookmark. 3. "The MSCA-NET is ready to serve you!" (13 May 2022) with a group photo of the MSCA-NCP family.



© European Union 2021

Unless otherwise noted the reuse of this presentation is authorised under the [CC BY 4.0](#) license. For any use or reproduction of elements that are not owned by the EU, permission may need to be sought directly from the respective right holders. Image sources: [iStockphoto.com/Unsplash](#)

MSCA Seal of Excellence (SoE)

EC generally announces the evaluation results in February-March

- **SoE certificates** awarded to proposals scored $\geq 85\%$ but did not get funding due to budget limitations.
- Generally sent out in March-April
- Applications may end up in the **reserve list** *i.e.* could be funded by the EC if the budget allows.
 - From 2023 the Swedish Research Council is handling the national MSCA Seal of Excellence (SoE) funding of SoE proposals on reserve list.
 - Host organisation representative for proposals considered for funding is contacted directly.



Already granted project?

We do not have access to previously awarded proposals
You must contact awardee directly yourself and ask

H2020

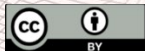
Dashboard: [R&I Projects - Project Details | Ark - Qlik Sense \(europa.eu\)](#)

Filtered for H2020.

Horison Europe

[R&I Projects - Project Details | Ark - Qlik Sense \(europa.eu\)](#)

CORDIS [Search | CORDIS | European Commission \(europa.eu\)](#)



© European Union 2021

Unless otherwise noted the reuse of this presentation is authorised under the [CC BY 4.0](#) license. For any use or reproduction of elements that are not owned by the EU, permission may need to be sought directly from the respective right holders. Image sources: [iStockphoto.com/Unsplash](#)

Status Associated countries and Third countries

Contact the MSCA-NCP
in the country of the
host institution

<https://ec.europa.eu/info/funding-tenders/opportunities/portal/screeen/support/ncp>

<https://ec.europa.eu/research/mariecurieactions/>

Latest UK status

UK joins Horizon Europe as associated partners from 2024. Details for participation in 2023 is not clearly communicated yet.

[FAQ 31046](#)

More info: <https://www.ukri.org/apply-for-funding/horizon-Europe/>

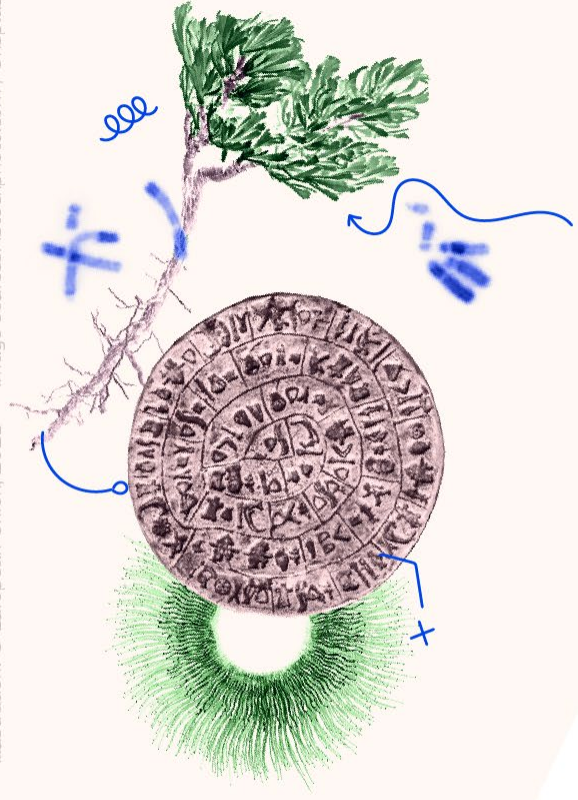
Latest Switzerland status

Switzerland is to be considered as an Third Country not associated to Horizon Europe in the frame of these calls.

For SE: organisations based in Switzerland can participate as associated partners funded by the State Secretariat for Education, Research and Innovation.

More info: [https://www.euresearch.ch/en/horizon-europe/excellent-science/marie-skodowska-curie-actions-\(msca\)-55.html](https://www.euresearch.ch/en/horizon-europe/excellent-science/marie-skodowska-curie-actions-(msca)-55.html)

https://ec.europa.eu/info/funding-tenders/opportunities/docs/2021-2027/common/guidance/list-3rd-country-participation_horizon-euratom_en.pdf



Thank you!

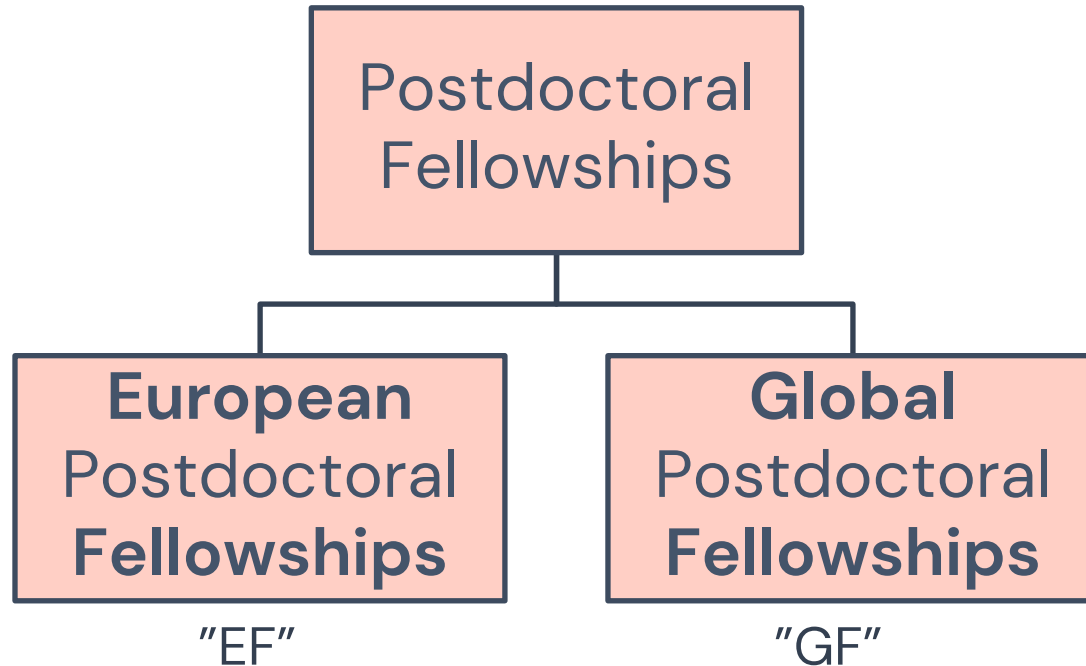
MSCA Postdoc Fellowships:

- Types of fellowships and Eligibility
- Budget & Finances at KI
- MSCA application support at KI, BOOTCAMP information

Ying Zhao, PhD. MSCA Grant Advisor

Grants Office, Research Support Office, KI

Marie Skłodowska-Curie Actions



Who applies?

- Fellows apply with an identified PI and their host organization
 - Fellow & PI apply together, agree on content of proposal
- **Fellows:** 1 proposal/fellow
- **PIs:**
 - 1 proposal/fellow, can apply with several fellows
 - If several, the proposals must have different objectives & work plans
- Call 2024 will open April 10th and close on September 11th 2024, 17:00 Brussels time (indicative dates)
 - Dates are preliminary – always check the call link for updates when call opens as the **deadline affects Mobility eligibility**
 - Documents e.g. Work Program, Guide for Applicants; proposal template published and updated when call opens

General eligibility criteria

- Open to all fields of research
- Host organization: located in EU Member State (MS) or [Associated Countries \(AC\)](#)
- “Third Country” = neither Member State nor Associated Country
- **Postdoc Fellow:**
 - **Unconditional* PhD Degree** or successful defense of doctoral thesis, obtained by deadline
 - **Max 8 yrs** after date of awarded PhD
 - Deductible time e.g. parental leave, career breaks, work outside research etc
- **The researcher must be in possession of a doctoral degree or have successfully defended their doctoral thesis before call deadline. The successful defence must be **unconditional (no further requirements/corrections that need to be addressed)** and take place before the call deadline. Supporting documentation may be requested.*
 - [Guide for Applicants 2023 Call as example](#) – Check [call link for 2024](#) version of **Guide for Applicants when call opens!**

European Postdoctoral Fellowships

- Fellowship is 12-24 Months
- Any nationality
- Doctoral degree or successfully defended thesis before deadline; max 8 yrs from date of award of (first) Doctoral degree.
- From any country to an EU country/Associated country **e.g. incoming to Sweden**
- Not have resided or carried out main activity more than 12 months during the last 3 years in the country of the potential host institution (e.g. Sweden) before call deadline
- Examples:

Australian citizenship, PhD from France. Postdoc in USA, wants to come to Sweden. Have no previous activities in Sweden.

Malaysian citizenship, incoming to KI (Sweden). Already at KI, worked at KI for less than 12 months by 11th Sep 2024.

Swedish citizenship, PhD from Sweden. Postdoc in USA 3 years. Activity time in Sweden max 12 months during 20210912 – 20240911

Global Postdoctoral Fellowships: max 3 years

Outgoing Phase

- 12–24 months in Third Country.
- Secondments Allowed

Return Phase

- Mandatory 12 months.
- Direct return to organization in EU MS/AC.
- No secondments allowed

Global Postdoctoral Fellowships

- Nationality: National (citizenship) or a long-term resident of EU MS or AC
- Doctoral degree or successfully defended thesis before deadline; max 8 yrs from date of award of (first) Doctoral degree.
- Mobility criteria: Have not lived or worked/studied in the **Third Country (Outgoing Phase country e.g. USA)** more than 12 months during the last 3 years, by the deadline Sep 13th.
- Can start the project in the EU/AC country max 3 months (e.g. Sweden) and then move to the Third Country (e.g. USA)
- Examples:

Spanish citizenship,
outgoing phase to USA,
Return Phase to Sweden.

Third Country nationality with
Long-term residency in
Sweden. Can start project in
Sweden, Outgoing phase to
Australia, then return to
Sweden.

MSCA Postdoctoral Fellowships

Secondments

- any country up to 1/3 of the fellowship duration

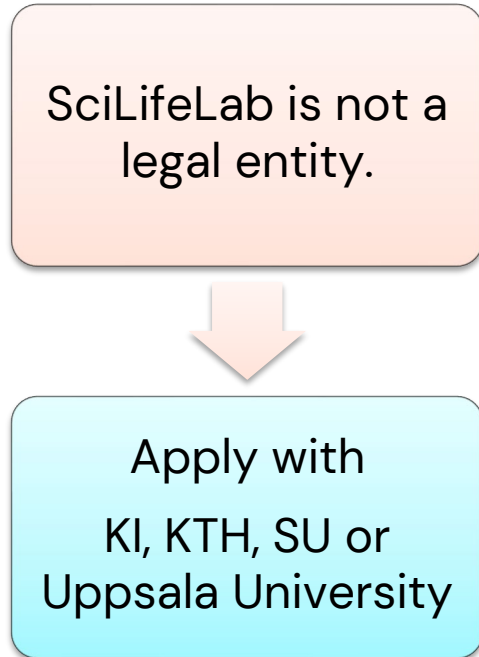
Optional additional placement

- max 6 months in **non-academic** organization within Europe
- At the end of the fellowship

Part-time work

- Prior approval by EU's Project Officer, case by case
- At least 50% time on MSCA; exception can be granted for medical reasons
- Not allowed during Outgoing Phase of Global PF

Host Organizations: Legal Entities



- Parts of work done at the Karolinska University Hospital: apply with KI or with Region Stockholm (former SLL) as Host Organization?
 - Contact Grants Office
- SöS and Danderyd Hospital is not part of Region Stockholm

Example budget European Fellowships Sweden, 24 Months with Family Allowance


Living Allowance	Mobility Allowance	Family Allowance	Research/ Training/Networking	Management/ Indirect Costs	TOTAL
152 887€	14 400 €	15 840 €	24 000 €	15 600 €	222 727 €

Approximate salaries for fellows at KI

- EUROS from MSCA is gross amount. Social charges and taxes must be deducted.
- Monthly, with EUR/SEK rate 11.0 as example
- **European Fellowships (incoming fellow) at KI**
 - Living Allowance: ~44,000 SEK (Sweden coefficient)
 - Mobility Allowance: ~5,000 SEK
 - Family Allowance (if applicable): ~5,200 SEK
- **Global Fellowships, e.g. Outgoing phase to USA, return phase to KI**
 - Living Allowance: ~36,000 SEK (USA coefficient)
 - Mobility Allowance: ~5,000 SEK
 - Family Allowance (if applicable): ~5,200 SEK

Contributions for recruited researchers Per person-month					Institutional unit contributions Per person-month	
Living allowance	Mobility allowance	Family allowance (if applicable)	Long-term leave allowance (if applicable)	Special needs allowance (if applicable)	Research, training and networking contribution	Management and indirect contribution
EUR 5 080	EUR 600	EUR 660	EUR 5 680 x % covered by the beneficiary	Requested unit* x (1/number of months)	EUR 1 000	EUR 650

* A country treatment coefficient applies to the living allowance in order to ensure equal purchasing power parity for all researchers
The information presented is preliminary and subject to the adoption of the work programme



Link:
https://ec.europa.eu/research/mariecurieactions/site/default/files/20210323_msca_postdoctoral_fellowships_v3.pdf

Budget for Postdoc Fellowships at KI, Sweden

- Budget is automatically set in the application portal
- European PF € 222,727 with Family Allowance;
 € 206,887 without
- European PF needs **Co-financing** ~320,000–350,000 SEK
- Global PF USA €305,928 with Family Allowance;
 €282,168 without
- Global PF needs **Co-financing** at KI ~400,000–460,000 SEK
- *Long-term Leave Allowance & Special Needs Allowance case by case if and when needed.*

Eligibility for Family Allowance according to MSCA definition of "Family", page 90 in the Work Program

"If the postdoctoral researcher has or acquires family obligations during the action duration, i.e. has persons linked to him/her by

- i. **Marriage**, or
- ii. a **relationship with equivalent status to a marriage** recognised by the legislation of the country or region where this relationship was formalised; or
- iii. **dependent children** who are actually being maintained by the researcher,

the family allowance must be paid to him/her as well "

Check for updated version of Work Program when [Call](#) opens.

Time Line *with subject to change*



10 April 2024

Call opens



11 Sep. 2024

Deadline



February 2025

Evaluation outcome



April–May 2025

Earliest project start



1 Sep 2026

Latest project start

Application support at KI


- <https://staff.ki.se/msca-postdoc-fellowships>
 - General information
 - Instructions for those who apply with KI as Host Organization – **KI login/VPN**
- Information webinar. Slides and recorded webinar will be published on <https://staff.ki.se/msca-postdoc-fellowships-info-seminar-2024>
- If you need help, contact ying.zhao@ki.se (if applying with KI) or if you're applying with other universities or organizations, **their** Grants Office or equivalent
- “Bootcamp” – for those applying with KI as host organization

MSCA–PF Bootcamp – for those who apply with KI as Host Organization

- Workshop to build up proposal
- Breakdown of award criteria Excellence, Impact, Implementation; how arrange CV + Ethics parts.
- Bootcamp = 1 day + 7 afternoon workshop sessions
 - **June 5th: 1 day**
 - overview of proposal structure.
 - Start writing your proposal over the summer.
 - **August 8th – 21st (preliminary dates): 7 Afternoon sessions**
 - Add & polish details; discussion with MSCA fellows
 - Dates for the August sessions will be announced on the [website](#) ~ end of May

Bootcamp Requirements

- PI and fellow agree on application and scientific project
- KI Application Assurance
 - Department checks PI's operational and financial capacity
- Outline according to template
- Set up application account on EU's portal
- <https://staff.ki.se/msca-postdocs-bootcamp-2024>



Karolinska Institutet Application Assurance Form
(For internal use only)

This form should be retained at the applicant department and archived when the application is granted.
A PDF should be sent to Grants Office: yjng.zhao@ki.se

MSCA Postdoctoral Fellowships European Postdoctoral Fellowships
 Global Fellowships - Outgoing Phase country: _____

Application Due Date (YYYY/MM/DD): _____
Call number/Identifier: _____
KI Principal Investigator (PI): _____
KI Fellow: _____
KI Department: _____
Project Title: _____
Project Acronym: _____
Total budget at the KI Department (€): _____
Cofunding¹ (list SEK required): _____

External Financial Funding Assurance Statement:

By signing below, we confirm that:

- 1) the listed PI may participate in the application described above².
- 2) the project will be performed at the KI department listed above when funding is awarded.
- 3) the PI, Head of Department and Head of Administration are aware of KI's rules and policies regarding indirect costs on external funding and certifies that the budget has been reviewed.
- 4) the PI, Head of Department and Head of Administration are aware of, and approve, cofunding requirements if applicable.

_____ Principal Investigator Name	_____ Principal Investigator Signature	_____ Date
_____ Head of Department Name	_____ Head of Department Signature	_____ Date
_____ Head of Administration Name	_____ Head of Administration Signature	_____ Date

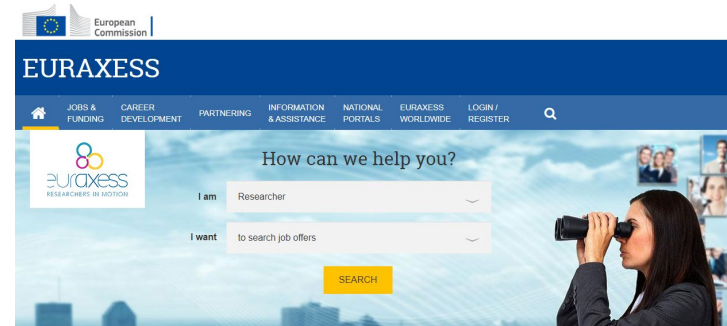
¹Cofunding is required for several EU programs including Marie Skłodowska Curie Actions
²The PI does not have any pending allegations of misconduct or other reason why they should not be allowed to participate in the application

Yes I am interested in MSCA–PF!

- Am I Eligible?
 - Mobility criteria – **count exact days!**
 - Max 8 year research experience rule for last year's call (**check for this year's version!**)
 - https://rea.ec.europa.eu/system/files/2023-04/Guidelines_8%20year%20rule_2023.pdf
 - [Information and calculate with self assessment tool](#)
- I have done two postdocs – should I be applying to MSCA or starting grants?
- Where do I want to go? France? Spain? USA?
 - Postdoc in USA – do I want to come back?
- Which organization should I apply with – Contact their Research Support Office/Grants Office
- Find PI
 - expertise area
 - PI's support for you: scientific & financial

Looking for positions? Where?

- At KI
<https://staff.ki.se/positions-at-ki>
- EURAXESS
<https://euraxess.ec.europa.eu/postdoc-opportunities>



Award criteria & resubmission

Excellence	Impact	Quality and efficiency of the implementation
Quality and pertinence of the project's research and innovation objectives (and the extent to which they are ambitious, and go beyond the state of the art)	Credibility of the measures to enhance the career perspectives and employability of the researcher and contribution to his/her skills development	Quality and effectiveness of the work plan, assessment of risks and appropriateness of the effort assigned to work packages
Soundness of the proposed methodology (including interdisciplinary approaches, consideration of the gender dimension and other diversity aspects if relevant for the research project, and the quality of open science practices)	Suitability and quality of the measures to maximise expected outcomes and impacts, as set out in the dissemination and exploitation plan, including communication activities	Quality and capacity of the host institutions and participating organisations, including hosting arrangements
Quality of the supervision, training and of the two-way transfer of knowledge between the researcher and the host	The magnitude and importance of the project's contribution to the expected scientific, societal and economic impacts	
Quality and appropriateness of the researcher's professional experience, competences and skills		
50%	30%	20%
Weighting		

**Resubmission
not allowed for
proposals
receiving a
score below
70%**

“Proposals involving the **same recruiting organisation** (and for Global Postdoctoral Fellowships also the associated partner hosting the outgoing phase) **and individual researcher** submitted to the previous call of MSCA Postdoctoral Fellowships under Horizon Europe and having received a score of less than 70% must not be resubmitted the following year.”

Eight main evaluation panels

Chemistry (CHE)

**Social Sciences
and Humanities
(SOC)**

**Economic
Sciences (ECO)**

**Information
Science and
Engineering
(ENG)**

**Environment and
Geosciences
(ENV)**

**Life Sciences
(LIF)**

**Mathematics
(MAT)**

Physics (PHY)

Summary

- Check your Eligibility
- Country of host organization; The host organization
- Area(s) of research – Research Project – proposal

- Global Fellowships: MSCA funding not enough for USA salary

- Be ready to spend a lot of time on the proposal!
- Early contact!



**Karolinska
Institutet**

<https://staff.ki.se/msca-postdoc-fellowships>

Questions:

ying.zhao@ki.se