



Photo: Liza Simonsson



Karolinska
Institutet

NEO breakfast meeting

Petter Höglund

*Chair Neo steering group and Head of MedH
2024-12-19*

Welcome! 😊

Agenda

- Freezer failure compensations, Petter Höglund
- EU support from central KI, Petter Höglund
- Report on ongoing work in Neo, Petter Höglund
- A word from the Neo manager, Elisabeth Raschperger
- Research in ten minutes, Rongron Fan (MedH)
- Q&A
- Breakfast mingle

Compensation for the freezer failure

- KI president allocates 30 MSEK to MedH over three years
 - 10 MSEK per year 2025–2027
- Compensation should be used to
 - Rebuild lost sample collections and other resources
 - Compensate for negative career impact
- MedH prefect is responsible for dividing funds to affected researchers independent of their department
- CIMED allocates 2 MSEK to be used in 2024
- MedH co-finances compensations 2025–2027 with 4,3 MSEK

Work process and principles for compensation allocation

- The reported value of losses was used as a proxy for costs to re-establish the material
- 5 categories of compensation for re-establishment:
 - 900, 700, 400, 200, 100 TSEK/year for three years
- 3 categories of compensation for career effects:
 - 900, 700, 400 TSEK/year for three years
- Working group making the decision: Petter Höglund, Eva Hellström-Lindberg and Janne Johansson (physical meetings, e-mail and telephone calls).

Compensations in figures

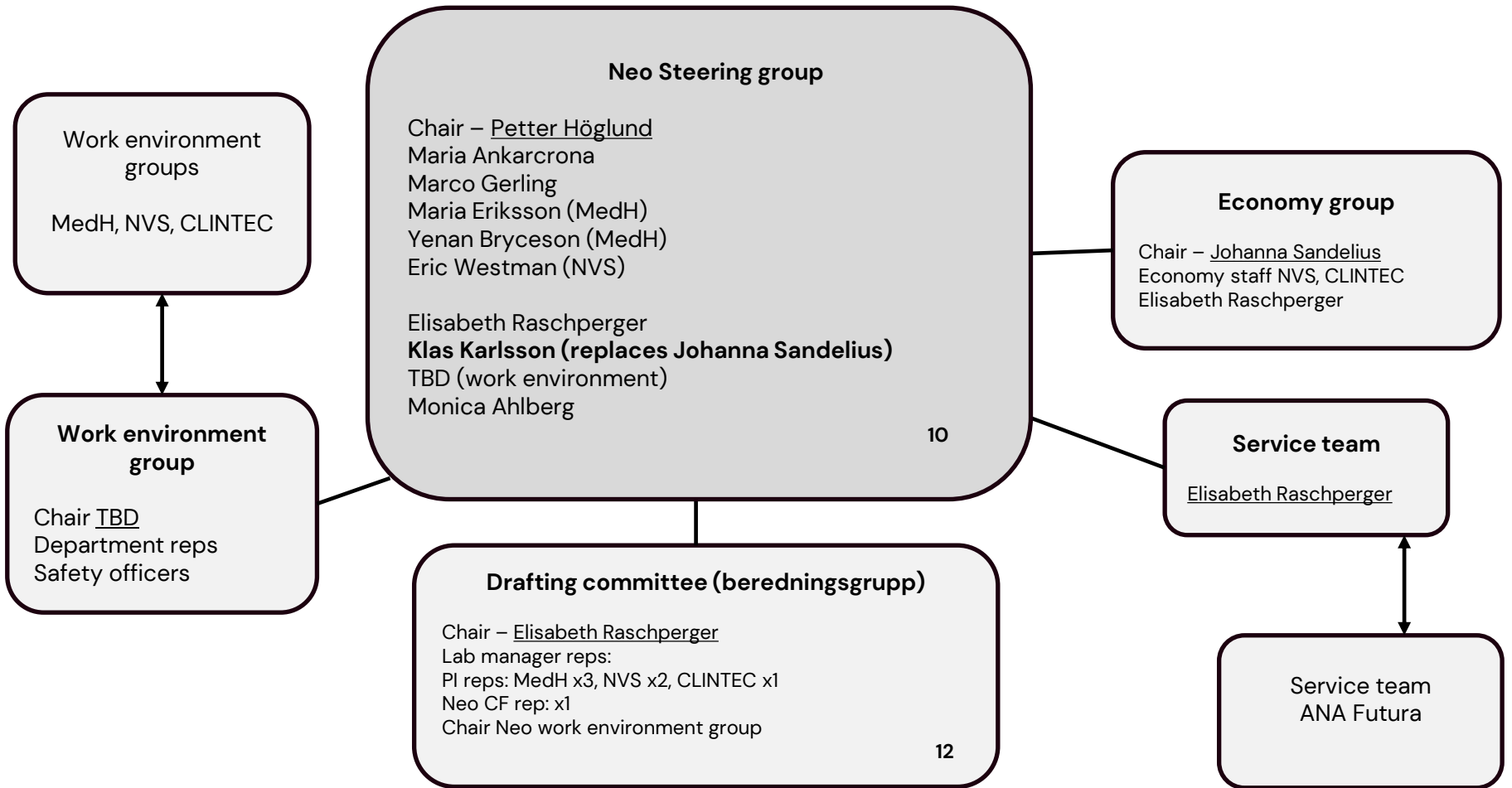
- 32 group/team leaders will receive compensation
- Total compensation 2025–2027: 36,3 MSEK
- Annual allocation of 12,1 MSEK per year:
 - 7,0 MSEK for re-establishment of biobanks (58%)
 - 5,1 MSEK for career compensation (42%)
 - HERM 74%, Lipid 10%, Cardiology 2%, BioNut 13%, Clintec 1%
- MedH is committed to support the creation of a centrally governed freezer facility and improved biobanking processes during the period.
- Compensations will be communicated this Friday.

KI bolsters EU funding for researchers

- KI is investing over SEK 200 million over five years on a new funding package for EU-financed research projects.
- The goals are to increase KI's visibility internationally, to coordinate more EU projects, and to create a more conducive environment for groundbreaking research.
- This will strengthen the possibility of a long-term approach to KI's research and hopefully make KI more attractive to outstanding researchers.

A three-part package

- 1. Co-financing** to cover costs not covered by EU grants.
 - Extra funds that the Head of Department can prioritise within the department.
- 2. One year of additional support** for researchers after a concluded ERC project (ERC Starting Grant, Consolidator Grant, Advanced Grant and Synergy Grant).
 - The researcher is awarded a one-off payment equivalent to one year's contract value for continued operation in the year after the ERC project has ended.
- 3. Increased project support** to reduce the administrative burden for researchers.
 - Two new project coordinators are recruited to facilitate the management of large research projects – from application to implementation and closure.



Composition of the drafting committee in Neo

Decided on 2024-12-12

Neo Manager – convener

- Elisabeth Raschperger

PI:s

- Karolina Kublickiene, Clintec
- Niklas Mejhert, MedH
- Rongrong Fan, MedH
- Tbd, NVS

Lab managers

- Anne-Sofie Johansson, MedH
- Nina Kronqvist, MedH
- Lina Cordeddu, MedH

CF Director

- Sylvie Le Guyader, LCI

Work Environment Coordinator

- Tbd

Neo economy – new model to divide common costs

Current model

- Running costs allocated based on **head count**.
- Classified as '**wet**' or '**dry**' depending on laboratory work or not.
- Head count is **updated every six months**
- This model is **time-consuming**, subject to **uncertainty in assessment**, requires a lot of **administration** and creates **poor predictability** of operating costs for individual groups.

New model

- Running costs allocated based on rented **square metres** (just as for the rent cost).
- Requires **minimal administration**, is **transparent** and **predictable**.
- Same model as in ANA Futura and the proposed change is in line with the **objective of harmonising** between Neo and ANA Futura.
- A reduction in rented space can **directly affect** the total cost of a research team.

Decision by the Neo Steering group

2024-12-12

- The Steering group **decided on adopting the new model** for allocating operating costs based on leased space rather than on head count.
- The steering group has assigned Elisabeth Raschperger and Johanna Sandelius to **continue the work** on Neo's finances by:
 - Analysing the consequences of converting the current freezer hotel into a freezer facility.
 - Reviewing the Property and Facilities Office's "swelling" areas within Neo and how to deal with the cost of these.
 - Suggesting a transparent monitoring model for Neo's finances with budgeting and regular reconciliation of operating cost trends.

Neo common economy

- This is the **most prioritised** question right now.
- Active work on common costs, follow-up, annual budget and transparency.
- Optimising the space rented in Neo to liberate larger free areas.
- Defining principles for what defines a common area.

Other ongoing projects in Neo

- **Work environment (Annamaj Stolt)**
- **Freezer facility and biobank (Teresa Mortera Blanco, Erik Lundgren)**
- **Service and the service team (Klas Karlsson)**
- An attractive scientific environment
- Infrastructures
- Integration with ANA Futura and the rest of Campus Flemingsberg

Freezer facility training and SOP (Erik Lundgren)

- Courses in liquid nitrogen safety
 - Three courses have been given
 - Two more courses planned
 - 52 participants so far (11 in recapitulation course)
- **Safety equipment** has been purchased and will be placed by the freezer hotel entrance on floor 3.
- Work on **risk analyses and SOPs** is progressing.
- Technically, the freezer hotel is in a **better condition** after a tank change and other measures.
- The freezers will be **checked on 23 December**.

Scientific advisory board for PKL South campus animal facility (Petter Woll)

Purpose: Support PKL management with critical and strategic decisions that impact animal work on the South Campus

Members:

- Petter S. Woll, MedH/HERM
- Hong Qian, MedH/HERM
- Malin Flodström Tullberg, MedH/CIM
- Joel Nordin, LABMED
- Marco Gerling, CLINTEC
- Gabriel Oniscu, KUS/CLINTEC
- Elisabeth Andersson, Comparative Medicine

Information for Neo staff during the holidays (Elisabeth Raschperger)

The Service Team reception (floor 8) will be staffed on the following dates:

- Monday, December 23
- Friday, December 27
- Monday, December 30
- Thursday, January 2
- Friday, January 3

The Service team is **not on call** after normal working hours, on weekends, or during holidays.
For service requests or error reports, please place a ticket via email serviceteam-neo@ki.se.

Ultra-Freezers and Isothermal Tanks:

KI security guard will monitor all ultra-freezers and isothermal tanks four times daily during Christmas and New Year holidays (Dec 23 – Jan 2).

Contact information freezer hotel:

Neo Freezer hotel outside normal working hours: 070-215 82 91

COOR/Hemsö: 0771-777 111

Neo service team

Anders Lindholm, Dawud Nantor and Johan Dethlefsen – Room 8620, floor 8

serviceteam-neo@ki.se

Nilex, case management system

Examples of cases:

- request for card authorization/access to Neo
- error report of office/lab/common areas
- matters regarding office/lab equipment and furnishing
- service and maintenance of AV and lab equipment
- cleaning and waste

Note: do not CC anyone when placing a case.



Karolinska
Institutet

Q&A



Breakfast mingle





Karolinska
Institutet



Merry Christmas
&
Happy New Year!





**Karolinska
Institutet**