



Karolinska
Institutet

Marie Skłodowska–Curie Actions Postdoctoral Fellowships 2025 Information seminar

March 4, 2025

Ying Zhao, PhD

Gratns Office, Karolinska Institutet



**Contents in this presentation are subject to change – therefore,
always check the links directly for updated information.**

Agenda

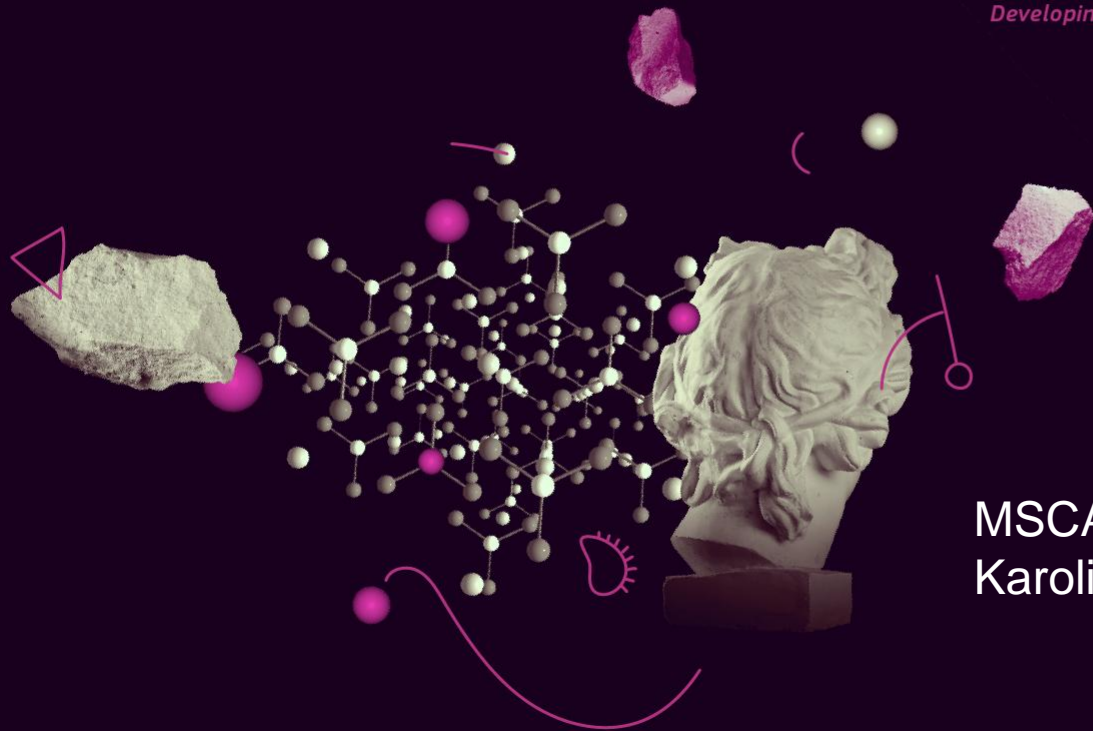
- 14:00 – 14:30 **EU Framework Program: Political Objectives of MSCA.**
Isabel Dellacasa Lindberg, National Contact Point MSCA
Sweden, The Swedish Research Council (Vetenskapsrådet)
- 14:30 – 15:15 **Eligibility, Budget, Application support at KI.**
Ying Zhao, MSCA Grant Advisor, KI Grants Office
- 15:15 – 15:45 **Questions**

Due to technical problems, the webinar from 2025 was not recorded.
Recorded webinar from 2024 is available at [MSCA Postdoc Fellowships Info Seminar 2025 | Staff Portal](#).

MSCA

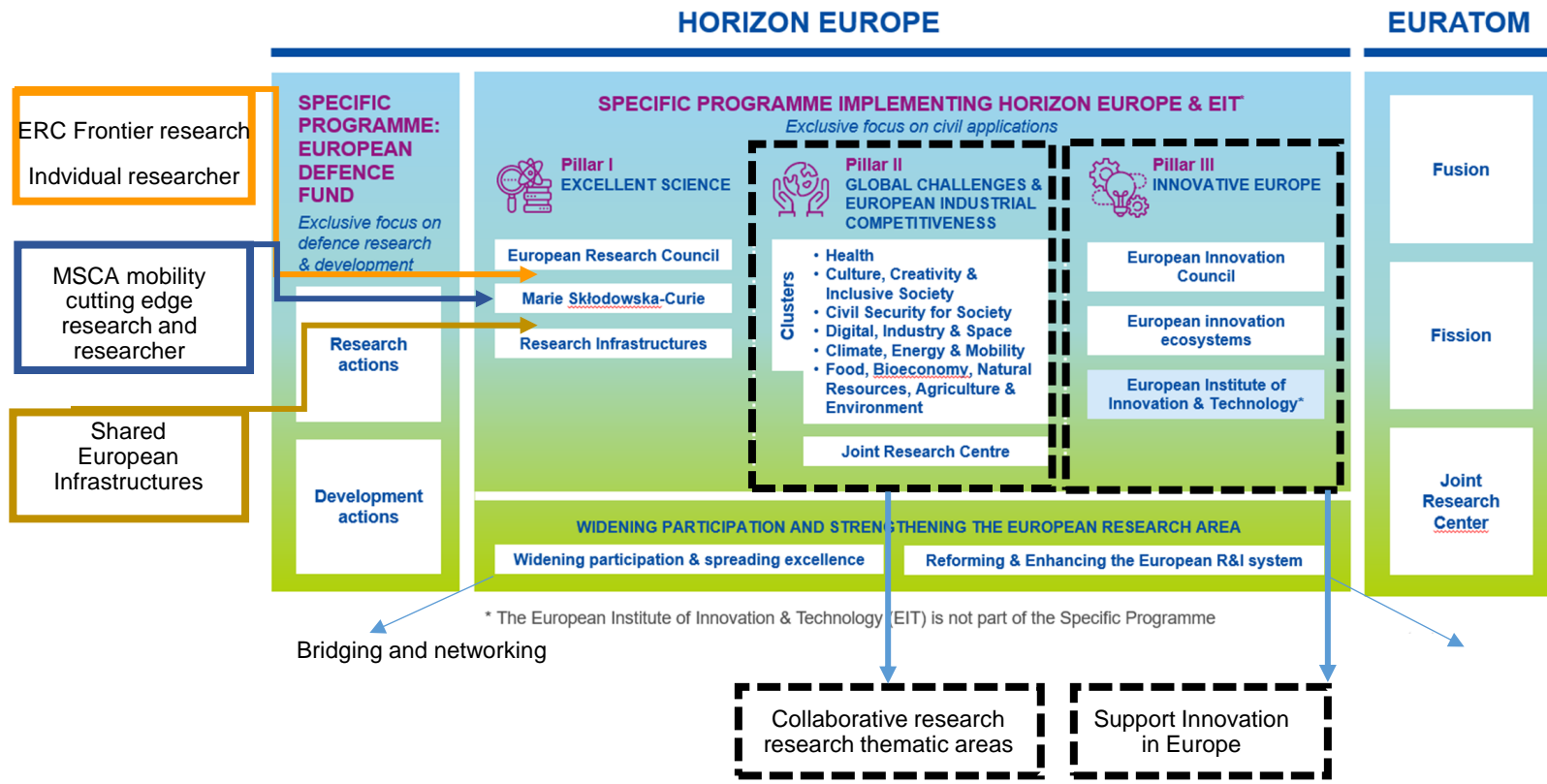
Marie Skłodowska-Curie Actions

Developing talents, advancing research

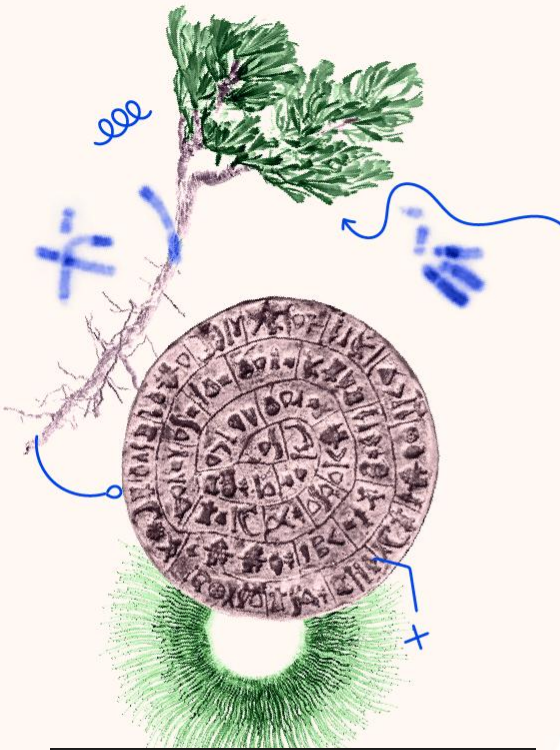


MSCA-PF 2025
Karolinska Institutet

Horizon Europe – frame work program for research & innovation



Marie Skłodowska Curie Actions - launched 1996



18



Over the last 27 years the Marie Skłodowska-Curie Actions have funded thousands of researchers, of which **18** became Nobel Laureates. Today, we celebrate the great contribution of the MSCA in fostering excellence and a thriving scientific community.

Celebrating the 156th anniversary of Marie Skłodowska-Curie's birth...
ec.europa.eu/news/celebrating-156th-anniversary-marie-skłodowska-curie-s-birth...

Under Horizon 2020 (2014-2020), the MSCA:

Funded **1080 doctoral programmes**, of which 156 industrial doctoral programmes and 76 joint doctorates

Involved **4 700 companies**, of which **2 200 SMEs**

Involved **37% of researchers** from non-EU countries and around **1300 organisations** from non-EU and non-associated countries

Since 1996
 budget
14 billion €
 researchers
140 000
 (39 000 PhDs)

Horizon Europe (2021-2027)

budget
6.6 billion €
 researchers
65 000
 (25 000 PhDs)

Under Horizon Europe, the MSCA will:

Strengthen organisations

The MSCA support excellent doctoral and postdoctoral programmes and collaborative projects worldwide, promoting structuring impact on organisations

Foster research and innovation beyond academia

The MSCA boost ties between academia and other non-academic organisations with various incentives, increasing fellows' exposure to other sectors

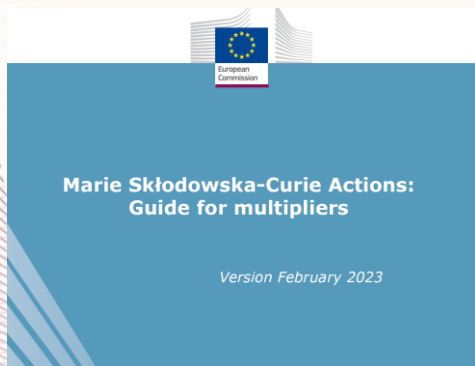
Build international links

The MSCA are key in attracting talent to Europe, building international, strategic partnerships, and promoting global research mobility and science cooperation

Marie Skłodowska-Curie Actions

[Marie Skłodowska-Curie actions 2021-2027 - Publications Office of the EU \(europa.eu\)](https://publications-office.europa.eu/)

MSCA actions



<https://marie-sklodowska-curie-actions.ec.europa.eu/document-library/>

[Home | Marie Skłodowska-Curie Actions \(europa.eu\)](#)

The MSCA have 5 main actions

Doctoral Networks

implement doctoral programmes (including joint doctorates and industrial doctorates) **by international partnerships** of organisations from different sectors. They train highly-skilled doctoral candidates, stimulate their creativity, enhance their innovation capacities and boost their employability in the long-term.

Postdoctoral Fellowships

support researchers' careers and foster excellence in research and innovation. Researchers holding a PhD can carry out their research activities, acquire new skills and develop their careers abroad, whilst developing competences in non-academic sectors and working within interdisciplinary teams.

Staff Exchanges

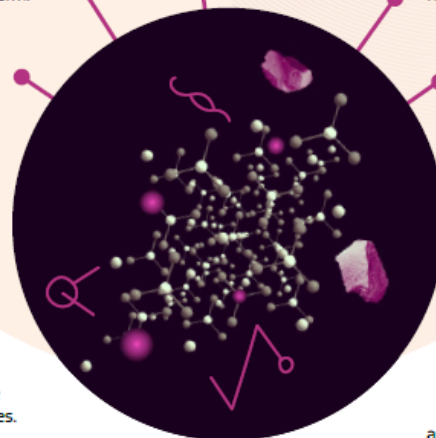
encourage short-term international and inter-sectoral exchanges of research and innovation staff through sustainable, collaborative projects in Europe and beyond. By doing so, they enhance knowledge and skills transfer and increase organisations' research and innovation capacities.

MSCA and Citizens

brings research and researchers closer to children, families and the public at large through the European Researchers' Night - the annual research communication and promotion event taking place at the end of September across EU Member States and Horizon Europe Associated Countries.

COFUND

co-finance regional, national and international doctoral and postdoctoral programmes for researchers' training and career development. The COFUND action spreads MSCA's best practices by setting high standards and excellent working conditions, and boosts training and international, interdisciplinary and inter-sectoral mobility.



Success rate 2024 call

REA received **10,360** applications for this call, 16,6 % (**15.8% 2023**) of which were selected for funding

1528 researchers through **European Postdoctoral Fellowships**

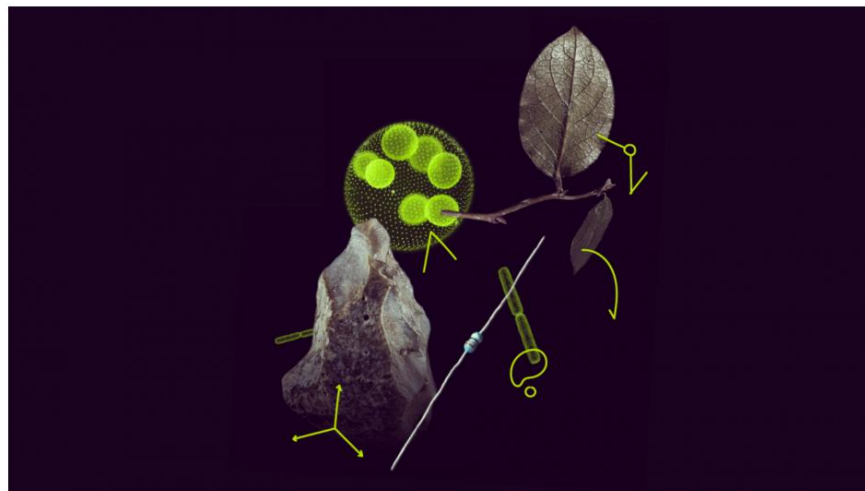
168 researchers through **Global Postdoctoral Fellowships**

2940 applicants with an evaluation score equal to or above 85%, but whose proposal could not be funded due to insufficient budget – **Seal of Excellence**

Published: 11 Feb 2025

MSCA awards €417 million to postdoctoral researchers

1696 outstanding postdoctoral researchers were selected for funding among 10,360 applicants.



[MSCA awards €417 million to postdoctoral researchers](#) | [Marie Skłodowska-Curie Actions](#)

MSCA Seal of Excellence (SoE)

https://research-and-innovation.ec.europa.eu/funding/funding-opportunities/seal-excellence_en

EC generally announces the evaluation results in March.

- **SoE certificates** awarded to proposals scored $\geq 85\%$ but did not get funding due to budget limitations.
- Applications may end up in the **reserve list** i.e. could be invited to the main list by the EC if the budget allows.
- Applications may end up in the **below available budget list** i.e. will not be invited to the main list by the EC if the budget allows.
 - VR handles the national MSCA Seal of Excellence (SoE) funding of SoE proposals on reserve list.
 - **On the national ranking list VR will contact the beneficiary grants office for proposals considered for funding**

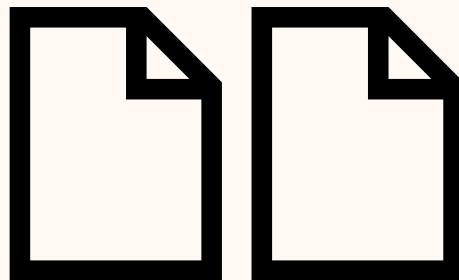
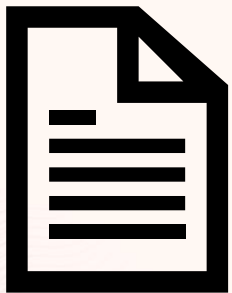


[55 researchers in Sweden awarded MSCA Postdoctoral Fellowship 2024 - Swedish Research Council](#)

Part A and Part B1 & B2

Administrative part

Narrative part



Part A

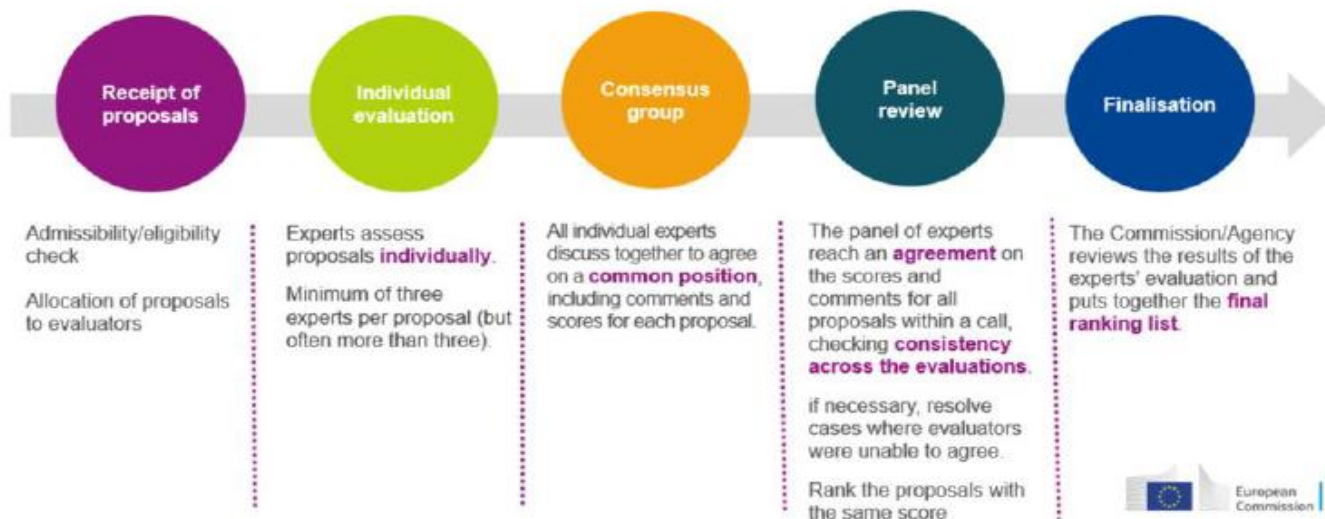
Part B1 and B2



Evaluation

Evaluation of Marie Skłodowska-Curie Actions (MSCA)

REA – European Research Executive Agency



Each panel is overseen by a panel Chair and vice-chairs

An independent observer is appointed by the REA to observe the overall evaluation process

Work programme 2023-2025

The spring update of the main Horizon Europe Work Programme 2023-2025 was adopted by the Commission on 17 April 2024, with the official reference C(2024) 2371.

8 scientific panels – bottom up & open to all domains

Resubmission restrictions depending on program!

https://ec.europa.eu/info/funding-tenders/opportunities/docs/2021-2027/horizon/wp-call/2023-2024/wp-2-msca-actions_horizon-2023-2024_en.pdf



EN

Horizon Europe

Work Programme 2023-2025

2. Marie Skłodowska-Curie Actions

(European Commission Decision C(2024) 2371 of 17 April 2024)

Guides for applicants

– when call opens

☐ Specific Guide for Applicants (GfA)

Re-submission restriction!
If score <70%
cannot submit following
year with same host and supervisor

☐ Guidelines on Supervision

[MSCA Guidelines on Supervision | Marie Skłodowska-Curie Actions](https://europea.eu)
(europea.eu)

Early contact with the University Grants Office!



Horizon Europe Programme

Guide for Applicants

Marie Skłodowska-Curie Actions – Postdoctoral Fellowships (PF)

Version 3.0 - 2024
19/04/2024

Disclaimer

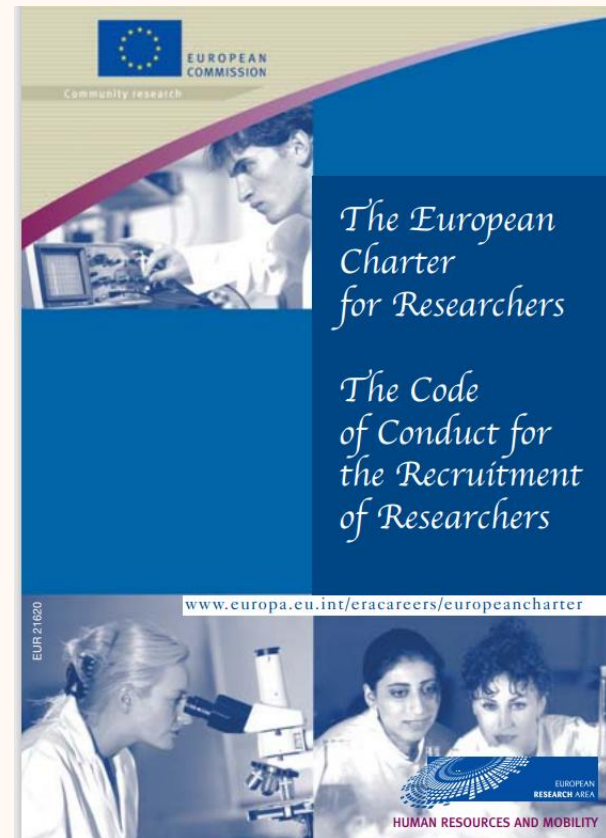
This guide aims to support potential applicants to the PF 2024 call. It is provided for information purposes only and is not intended to replace consultation of any applicable legal sources. Neither the European Commission nor the European Research Executive Agency (or any person acting on their behalf) can be held responsible for the use made of this guidance document. Note that the guidance provided in the Annexed Model Grant Agreement shall prevail in case of discrepancies.



Marie Skłodowska-Curie Actions
Guidelines on Supervision

European Charter for Researchers and the Code of Conduct for the Recruitment of Researchers

☐ MSCA is committed to the charter
[am509774CEE EN E4 \(europa.eu\)](http://am509774CEE_EN_E4.europa.eu)





EU Grants

How to complete your ethics self-assessment

Version 2.0
13 July 2021

Ethics Self-Assessment

Projects must comply with ethical principles (including the highest standards of research integrity) and applicable EU, international and national law. Applicants must have completed the ethics self-assessment as part of their application.

[how-to-complete-your-ethics-self-assessment en.pdf](#)

[wp-13-general-annexes horizon-2023-2024 en.pdf](#)

- ✓ Described in part A
- ✓ Additional information that could not be included in Part A of the proposal (if needed) is described in part B.

Gender in Horizon Europe

Gender Equality Plans as an eligibility criterion in Horizon Europe

Eligibility criterion for all public bodies, higher education institutions and research organisations from EU Member States and associated countries wishing to participate in Horizon Europe

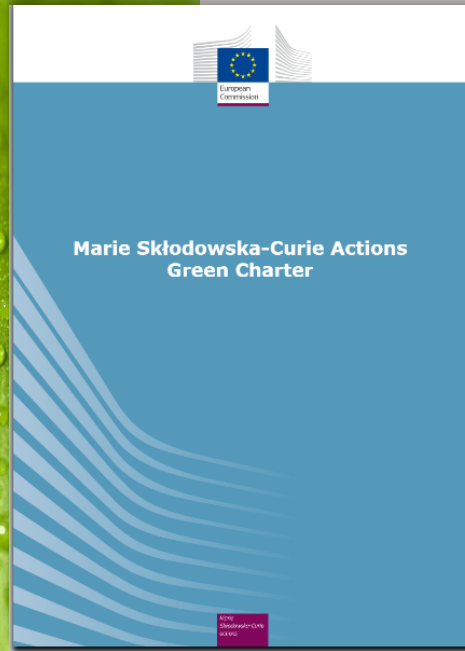
[Official Frequently Asked Questions](#)



- ✓ a requirement by default
- ✓ an award criterion evaluated under the excellence criterion, part B1 section 1.
- ✓ not new to MSCA

[Task-3.6-Gender Policy Brief.pdf](#)

MSCA Green Charter



Horizon Europe Work Programme:

“All MSCA-funded projects are encouraged to address the principles of the MSCA Green Charter and implement measures to minimise the environmental footprint of their activities”.

<https://ec.europa.eu/research/marie-curieactions/green-charter>

- ✓ streamlined across all actions in the future
- ✓ Applicants have the chance, not the obligation, to outline how they intend to adhere to the MSCA Green Charter
- ✓ this question was **not** used by experts in the 2023 year's evaluation
- ✓ May be included in the 2025 (indicative)

Categories for participation in MSCA

**Member States (MS)
or
Horison Europe
Associated countries
(HE AC)**

Third countries (TC)

Entities

Academic



Non-academic



Industry (SME)



Status Associated countries and Third countries

Contact the MSCA-NCP
in the country of the
host institution

<https://ec.europa.eu/info/funding-tenders/opportunities/portal/sc/en/support/ncp>

<https://ec.europa.eu/research/mariecurieactions/>

Latest UK status

UK joined Horizon Europe as associated country from 2024. All calls in Work Programme 2024 will be covered by association.

More info: <https://www.ukri.org/apply-for-funding/horizon-Europe/>

Latest Switzerland status

Switzerland joined Horizon Europe as associated country from 2025.

Swiss entities can host European Fellowships as beneficiaries and act as the return host in a Global Fellowship. It is no longer possible to choose a Swiss entity as the outgoing host in a Global Fellowship

More info: [Marie Skłodowska-Curie Actions \(MSCA\) - Euresearch](#)

https://ec.europa.eu/info/funding-tenders/opportunities/docs/2021-2027/common/guidance/list-3rd-country-participation_horizon-euratom_en.pdf

Post Doctoral Fellowship – mono beneficiary (European Fellowship)

Open for world-
wide fellows
i.e. MS, HE-AC
or TC



European Postdoctoral Fellowships (EF)

✓ coming to Europe from any country in the world or moving within Europe

✓ 12-24 months

Up to 1/3 of
standard duration

Optional

Secondment



MS, HE-AC or TC

Additional 6 months

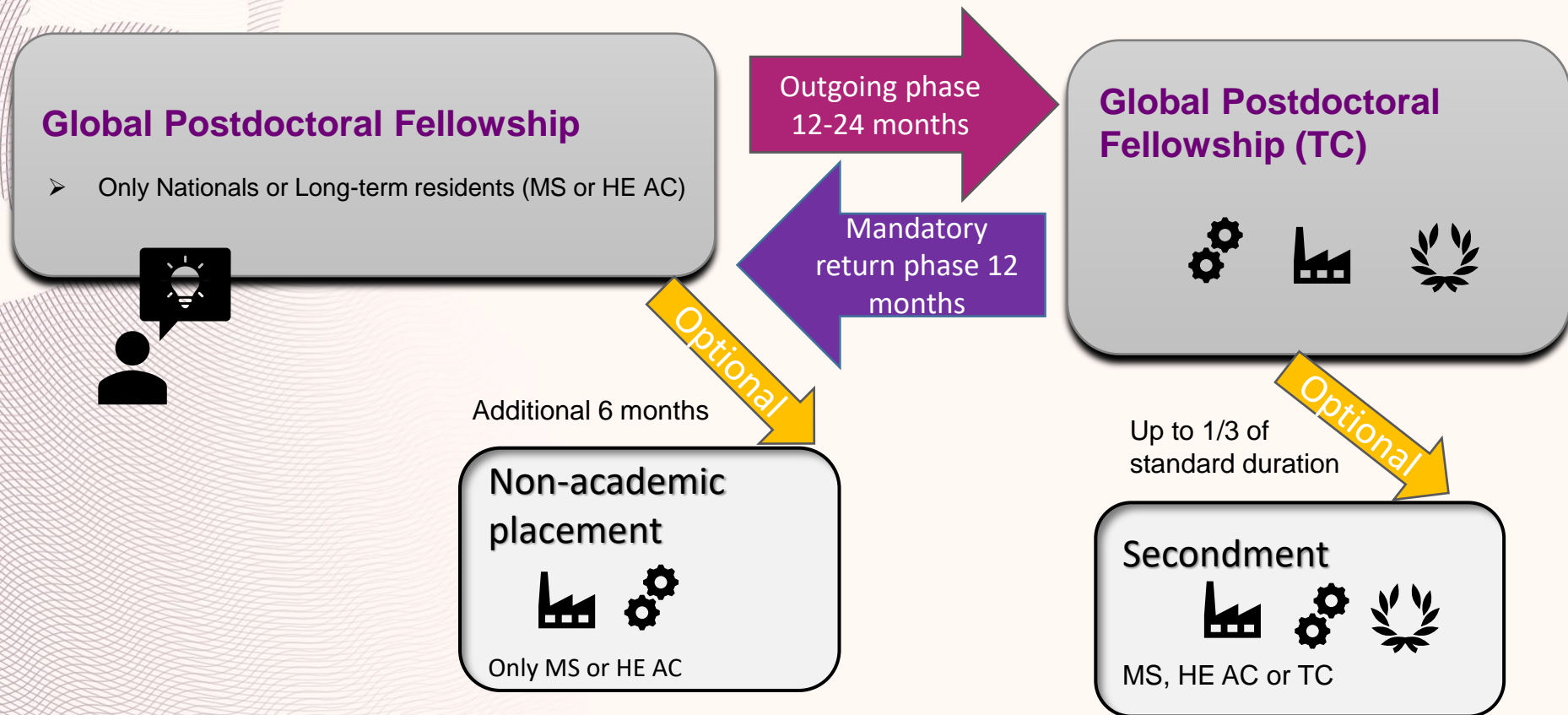
Optional

Non-academic placement



Only in MS or HE-AC

Post Doctoral Fellowship – mono beneficiary (Global Fellowship)



Significance of the evaluation criteria

All criteria matters!

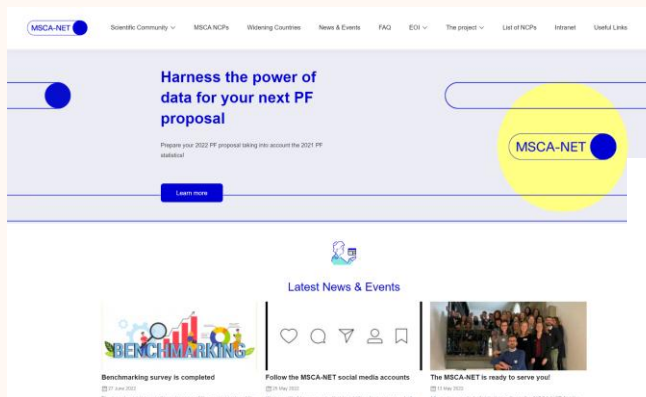
Page 123 in the work
programme



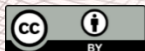
Excellence	Impact	Quality and efficiency of the implementation
Quality and pertinence of the project's research/innovation objectives (and the extent to which they are ambitious, and go beyond the state of	Developing new and lasting research collaborations, achieving transfer of knowledge between participating organisations and contributing to improving research and	Quality and effectiveness of the work plan, assessment of risks, and appropriateness of the effort assigned to work packages
50%	30%	20%
Weighting		

MSCA-NET project finalized replaced by Radiance

Replaced by the Radiance-project
Kick off in April



Home Page - MSCA-NET



© European Union 2021

Unless otherwise noted the reuse of this presentation is authorised under the CC BY 4.0 license. For any use or reproduction of elements that are not owned by the EU, permission may need to be sought directly from the respective right holders. Image sources: iStockphoto.com/Unsplash

Thank you & best of luck!

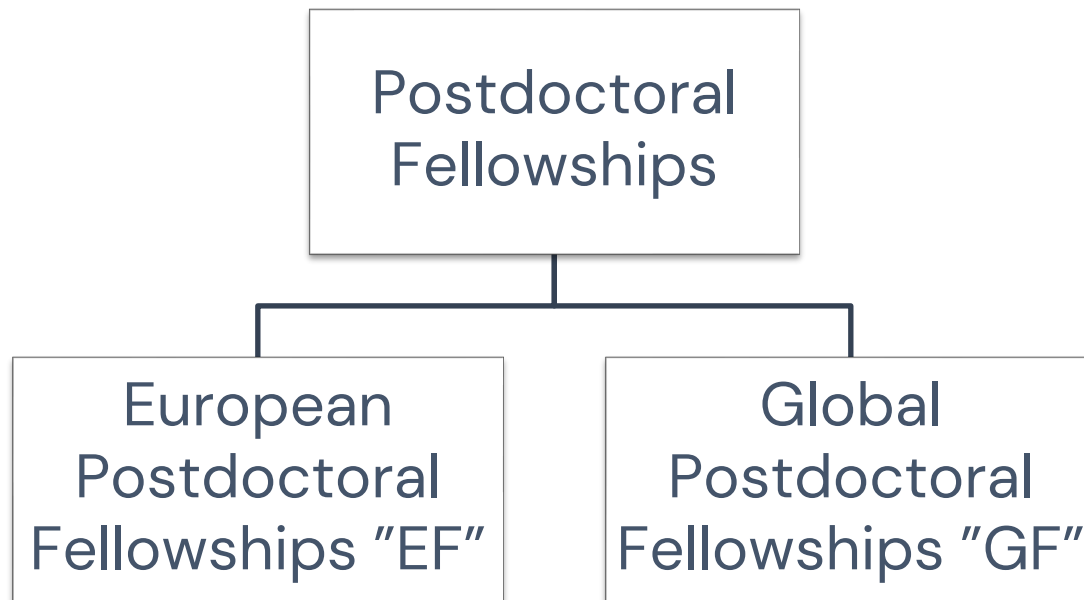
MSCA Postdoc Fellowships

- Eligibility
- Budget & Finances at KI
- Application support at KI

Ying Zhao, PhD. MSCA Grant Advisor

Grants Office, Research Support & External Relations Office, KI

Marie Skłodowska-Curie Actions



Who applies?

- Fellows apply with an identified PI and their host organization
 - Fellow & PI apply together, agree on content of proposal
- **Fellows: 1 proposal/fellow**
- **PIs:**
 - 1 proposal/fellow, **each PI can apply with several fellows**
 - If several, the proposals must have different objectives/work plans
- **Call 2025 is postponed to open May 8th. The deadline remains unchanged September 10th 2025, 17:00 Brussels time (indicative dates)**
 - Always check the call link for updates when call opens as the **deadline affects Mobility eligibility**

General eligibility criteria

- Open to all fields of research
- Host organization: located in EU Member State (MS) or Associated Countries (AC)
- “Third Country” = neither Member State nor Associated Country

Postdoc Fellow:

- **Unconditional* PhD Degree** or successful defense of doctoral thesis, obtained by deadline
- **Max 8 yrs** after date of awarded PhD
 - Deductible time e.g. parental leave, career breaks, work outside research etc

*The researcher must be in possession of a doctoral degree or have successfully defended their doctoral thesis before call deadline. The successful defense must be **unconditional (no further requirements/corrections that need to be addressed)** and take place before the call deadline. Supporting documentation may be requested.

Guidelines and documents

MSCA – How to apply – European Commission

- Documents collection e.g. Work Program, Guide for Applicants; proposal template; Guidelines on the calculation of 8-years research experience in Postdoctoral Fellowships under Horizon Europe; Postdoctoral Fellowships Self-assessment tool for the calculation of the 8-years research experience
- Check for updated documents for this year's Call.
- **Call:** HORIZON-MSCA-2025-PF will be published at EU Funding & Tenders Portal

European Postdoctoral Fellowships

- Fellowship is 12-24 Months
- Any nationality
- Doctoral degree or successfully defended thesis before deadline; max 8 yrs from date of award of (first) Doctoral degree.
- From any country to an EU country/Associated country **e.g. incoming to Sweden**
- Not have resided or carried out main activity more than 12 months during the last 3 years in the country of the potential host institution (e.g. Sweden) before call deadline
- Examples:

Any citizenship, PhD from France, Postdoc in USA.
Want to come to Sweden.
Have no previous activities in Sweden.

Any citizenship, incoming to KI (Sweden).
Already at KI, worked at KI for less than 12 months by Sep 10th, 2025.

Any citizenship, PhD from Sweden, Postdoc in USA.
Activity time in Sweden max 12 months during 20220911 – 20250910

Global Postdoctoral Fellowships: max 3 years

Outgoing Phase

- 12-24 months in Third Country.
- Secondments Allowed

Return Phase

- Mandatory 12 months.
- Direct return to organization in EU MS/AC.
- Secondments NOT allowed

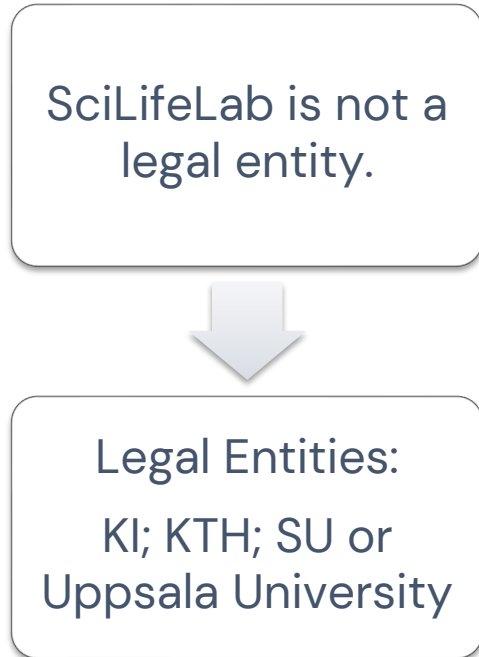
Global Postdoctoral Fellowships

- Nationality: National (citizenship) or a long-term resident of an EU Member State or Associated Country
- Doctoral degree or successfully defended thesis before deadline; max 8 yrs from date of award of (first) Doctoral degree.
- Mobility criteria: Have not lived or worked/studied in the **Third Country (Outgoing Phase country e.g. USA)** more than 12 months during the last 3 years, by the deadline.
- Can start the project in the EU/AC country max 3 months (e.g. Sweden) and then move to the Third Country (e.g. USA)

Spanish (EU) or Norwegian (AC) citizenship. Outgoing phase to Australia. Can come to Sweden to start project before going to Australia. Return Phase to Sweden.

Third Country nationality with Long-term residency in Sweden. Outgoing phase to Australia, then return to Sweden.

Host Organizations must be Legal Entities



- Parts of work done at the Karolinska University Hospital: apply with *KI* or with *Region Stockholm* as Host Organization?
 - PI must be employed or affiliated
 - Which organization have the capacity to host and manage the project?
- Other hospitals: find out which legal entity they belong to
- Contact respective Research Support Office!

Sweden budget European Fellowships

24 Months with Family Allowance

Living Allowance	Mobility Allowance	Family Allowance	Research/ Training/Networking	Management/ Indirect Costs	TOTAL
180 275€	17 040 €	15 840 €	24 000 €	15 600 €	252 755 €

Salaries *allowed by projekt* for fellows at KI

- EUROS from MSCA is **gross amount**. Fellows are guaranteed the full amount of € but social charges and local taxes must be deducted. **Precise salary set by HR and PI at each department**. Any leftover € in Allowances will be paid out to the fellow after project finishes.

With EUR/SEK rate 11.5 as example, per month

- **European Fellowships (incoming fellow) at KI**
 - Living Allowance: ~54,000 SEK (Sweden coefficient)
 - Mobility Allowance: ~6,200 SEK
 - Family Allowance (if applicable): ~5,800 SEK
- **Global Fellowships, e.g. Outgoing phase to USA, return phase to KI**
 - Living Allowance: ~74,000 SEK (USA coefficient)
 - Mobility Allowance: ~6,200 SEK
 - Family Allowance (if applicable): ~5,800 SEK

Budget for Postdoc Fellowships at KI, Sweden

- Budget is automatically set in the application portal
- European PF € 252 755 with Family Allowance;
 € 236 915 without
 → **European PF needs Co-financing* ~400,000–450,000 SEK**
- Global PF, USA €316 009 with Family Allowance;
 €300 169 without
 → **Global PF to USA needs Co-financing* at KI ~780,000–840,000 SEK**
- *Long-term Leave Allowance & Special Needs Allowance case by case if and when needed.*
- *Co-financing calculated with €/SEK rate 11.3*

Eligibility for Family Allowance according to MSCA definition of "Family", page 90 in the Work Program

"If the postdoctoral researcher has or acquires family obligations during the action duration, i.e. has persons linked to him/her by

- i. **Marriage**, or
- ii. a **relationship with equivalent status to a marriage** recognised by the legislation of the country or region where this relationship was formalised; or
- iii. **dependent children** who are actually being maintained by the researcher,

the family allowance must be paid to him/her as well "

Check for updated version of Work Program when [Call](#) opens.

Time Line *with subject to change*

- | | |
|---------------------|------------------------|
| • 8 May, 2025 | Call opens after delay |
| • 10 September 2025 | Deadline |
| • February 2026 | Evaluation outcome |
| • April–May 2026 | Earliest project start |
| • 1 Sep 2027 | Latest project start |

Application support at KI

- [MSCA Postdoc Fellowships | Staff Portal](#)
 - General information
 - Instructions for those who apply with KI as Host Organization – **KI login/VPN**
- [MSCA Postdoc Fellowships Info Seminar 2025 | Staff Portal](#)
 - Information webinar. Slides and recorded webinar will be published there
- [“MSCA Postdocs Bootcamp | Staff Portal”](#)
 - For those applying with KI as host organization
- If you need help, contact ying.zhao@ki.se (if applying with KI) or if you're applying with other universities or organizations, **their** Grants Office or equivalent


MSCA-PF Bootcamp

For fellows who apply with KI as Host Organization

- Workshop to build up proposal
- Breakdown of award criteria Excellence, Impact, Implementation; how arrange CV + Ethics parts.
- Bootcamp = 1 day + 7 afternoon workshop sessions
 - **June 13th: 1 day (preliminary)** overview of proposal structure.
Start writing your proposal over the summer.
 - **August 5 – 22 (preliminary): 7 Afternoon sessions** Add & polish details; discussion with MSCA fellows
 - Dates for the August sessions will be announced on the website in May

Bootcamp Requirements

- PI and fellow agree on application and scientific project
- KI Application Assurance
 - Department checks PI's operational and financial capacity
- Outline according to template
- Set up application account on EU's portal
- MSCA Postdocs Bootcamp| Staff Portal

**Karolinska
Institutet**

Application Assurance Form
(For internal use only)

This form should be retained at the applicant department and archived when the application is granted.

A PDF should be sent to Grants Office: ying.zhao@ki.se

MSCA Postdoctoral Fellowships

☐ European Postdoctoral Fellowships

☐ Global Fellowships - Outgoing Phase country:

Application Due Date (YYYY/MM/DD):

Call number/Identifier:

KI Principal Investigator (PI):

KI Fellow:

KI Department:

Project Title:

Project Acronym:

Total budget at the KI Department (€):

Cofunding¹ (list SEK required):

External Financial Funding Assurance Statement:

By signing below, we confirm that:

- 1) the listed PI may participate in the application described above².
- 2) the project will be performed at the KI department listed above when funding is awarded.
- 3) the PI, Head of Department and Head of Administration are aware of KI's rules and policies regarding indirect costs on external funding and certifies that the budget has been reviewed.
- 4) the PI, Head of Department and Head of Administration are aware of, and approve, cofunding requirements if applicable.

Principal Investigator Name

Principal Investigator Signature

Date

Head of Department Name

Head of Department Signature

Date

Head of Administration Name

Head of Administration Signature

Date

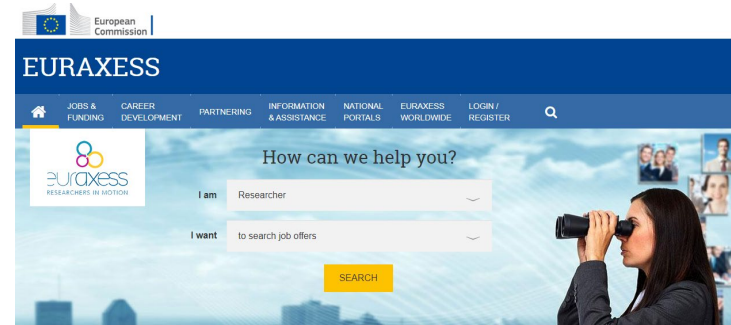
¹Cofunding is required for several EU programs including Marie Skłodowska Curie Actions²The PI does not have any pending allegations of misconduct or other reason why they should not be allowed to participate in the application

Yes I am interested in MSCA–PF!

- Am I Eligible?
 - Mobility criteria – **count exact days!**
 - Max 8 year research experience rule [Horizon Europe MSCA – How to apply – European Commission](#)
- I have done two postdocs – should I be applying to MSCA or starting grants?
- Where do I want to go? France? Spain? USA?
 - Postdoc in USA – do I want to come back?
- Which organization should I apply with – Contact their Research Support Office/Grants Office
- Find PI
 - expertise area
 - PI's support for you: scientific & financial

Looking for positions? Where?

- At KI
<https://staff.ki.se/positions-at-ki>
- EURAXESS
<https://euraxess.ec.europa.eu/>
postdoc opportunities, career guidance



Summary

- Check your Eligibility
- Country of host organization
- Host Organization
- Area(s) of research – Research Project – proposal
- Global Fellowships: check whether MSCA is enough for salary
- Be ready to spend a lot of time on the proposal!
- Early contact!

EXTRA SLIDES

Eight main evaluation panels

Chemistry (CHE)

**Social Sciences
and Humanities
(SOC)**

**Economic
Sciences (ECO)**

**Information
Science and
Engineering
(ENG)**

**Environment and
Geosciences
(ENV)**

**Life Sciences
(LIF)**

**Mathematics
(MAT)**

Physics (PHY)

MSCA Postdoctoral Fellowships

Secondments

- any country up to 1/3 of the fellowship duration

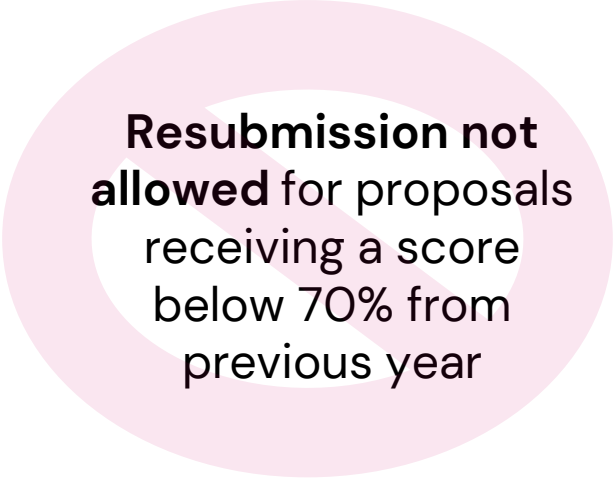
Optional additional placement

- max 6 months in **non-academic** organization within Europe
- At the end of the fellowship

Part-time work

- Prior approval by EU's Project Officer, case by case
- At least 50% time on MSCA; exception can be granted for medical reasons
- Not allowed during Outgoing Phase of Global PF

Resubmission



Resubmission not allowed for proposals receiving a score below 70% from previous year

“Proposals involving the **same recruiting organisation** (and for Global Postdoctoral Fellowships also the associated partner hosting the outgoing phase) **and individual researcher** submitted to the previous call of MSCA Postdoctoral Fellowships under Horizon Europe and having received a score of less than 70% must not be resubmitted the following year.”

– Guide for Applicants



**Karolinska
Institutet**

<https://staff.ki.se/msca-postdoc-fellowships>

Questions:

ying.zhao@ki.se