



October 21, 2020

Some housekeeping rules...

- **Please mute your microphone**
- **We encourage you to have your camera turned on**
- **Please write your question/s in the chat or raise your hand**
- **Questions will answered by the end of the meeting**



- **Presentation of our new chair of the ANA Futura steering committee** – *Matti Sällberg, Labmed*
- **Latest ANA Futura news** – *Lars Frelin*
- **Presentation of new research group** – Myriam Aouadi
- **Status update from the Pre-GMP facility** – Anna Pasetto
- **Status update from the BSL3 facility** – Jonas Klingström
- **Update from the Service team** – Rasmus Larsson
- **Questions from the staff**



- **Matti Sällberg – Head of Department, Laboratory Medicine**



- *COVID-19*
- *ANA Futura webpage*
- *Recovery rooms*
- *Common laboratories*
- *Meetings rooms*

Facility
manager

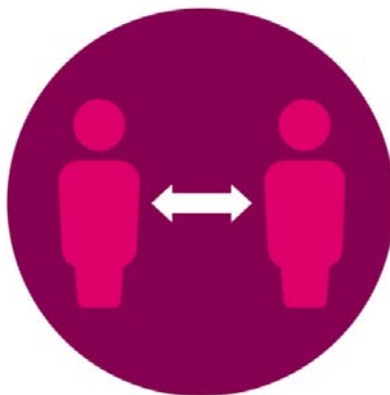


Lars Frelin
LabMed



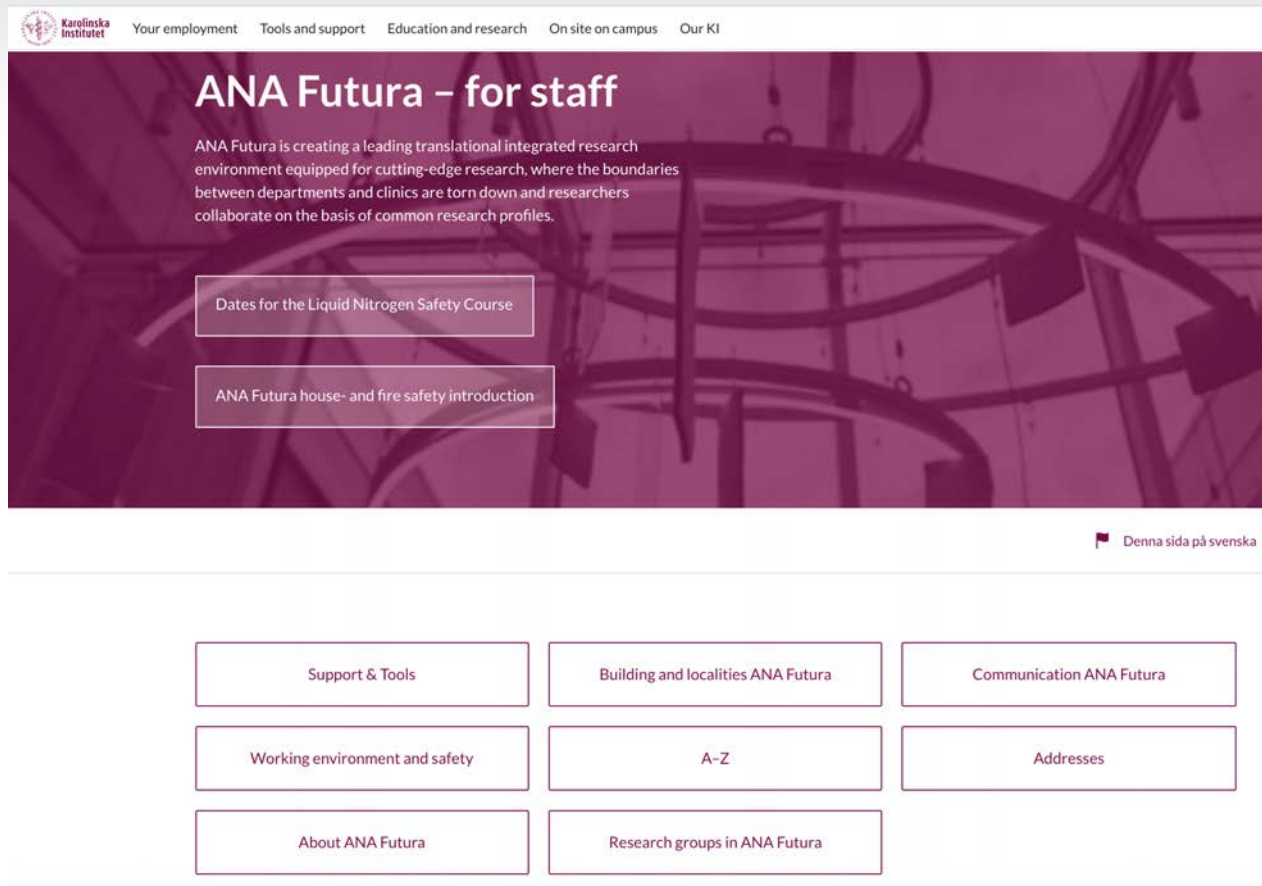
COVID-19: Remember to follow the KI recommendations and guidelines

- We occasionally experience problem with physical distancing within ANA Futura
- **The Steering Committee emphasizes that physical distance should be maintained**



ANA Futura webpage

- Most information about ANA Futura is to be found on our webpage
- <https://staff.ki.se/ana-futura-for-staff>



The screenshot shows the homepage of the ANA Futura - for staff webpage. At the top, there is a navigation menu with links: "Your employment", "Tools and support", "Education and research", "On site on campus", and "Our KI". The main heading is "ANA Futura - for staff". Below the heading, a paragraph describes the research environment: "ANA Futura is creating a leading translational integrated research environment equipped for cutting-edge research, where the boundaries between departments and clinics are torn down and researchers collaborate on the basis of common research profiles." Two call-to-action buttons are visible: "Dates for the Liquid Nitrogen Safety Course" and "ANA Futura house- and fire safety introduction". At the bottom right, there is a language selector for "Denna sida på svenska". A grid of seven buttons is located at the bottom of the page, providing quick access to various resources: "Support & Tools", "Building and localities ANA Futura", "Communication ANA Futura", "Working environment and safety", "A-Z", "Addresses", "About ANA Futura", and "Research groups in ANA Futura".

New routine for the recovery room

- **Current routine:** on the the ANA Futura webpage
- **What will be changed in the new routine:** The key cards will be available in a looked cabinet in the ANA Futura reception (instead of 8th floor Labmed administration)
- **Two cards:** one for recovery room floor 7 and one for recovery room floor 8

Recovery rooms in ANA Futura

Routines for using the recovery rooms the 7th and 8th floor.

Routines for now:

- All key cards are available in a locked cabinet on the 8th floor (*in the corridor opposite the office of Jenny Degerholm Langsmo, at Labmed administration council*). Code: **7790**
- Inform a colleague in which room you will go and rest (there are two rooms available, one on the 7th floor and one on the 8th floor).
- Collect the key card in the locked cabinet marked with your department name.
- Check-in on the note next to the cabinet.
- When you are done using the room, put the card back in the locked cabinet and write the time of check-out on the note.
- You should only use the recovery room for **an hour at the most**, if you are still not feeling well after that hour you should go home.
- It is important that the recovery rooms are locked so staff do not use it without anyones knowledge.
- A colleague should always be informed that someone is using the recovery room.
- After office hours (evenings / weekends), the immediate manager is responsible for supervising his/her staff using a recovery room (if no colleague is available).

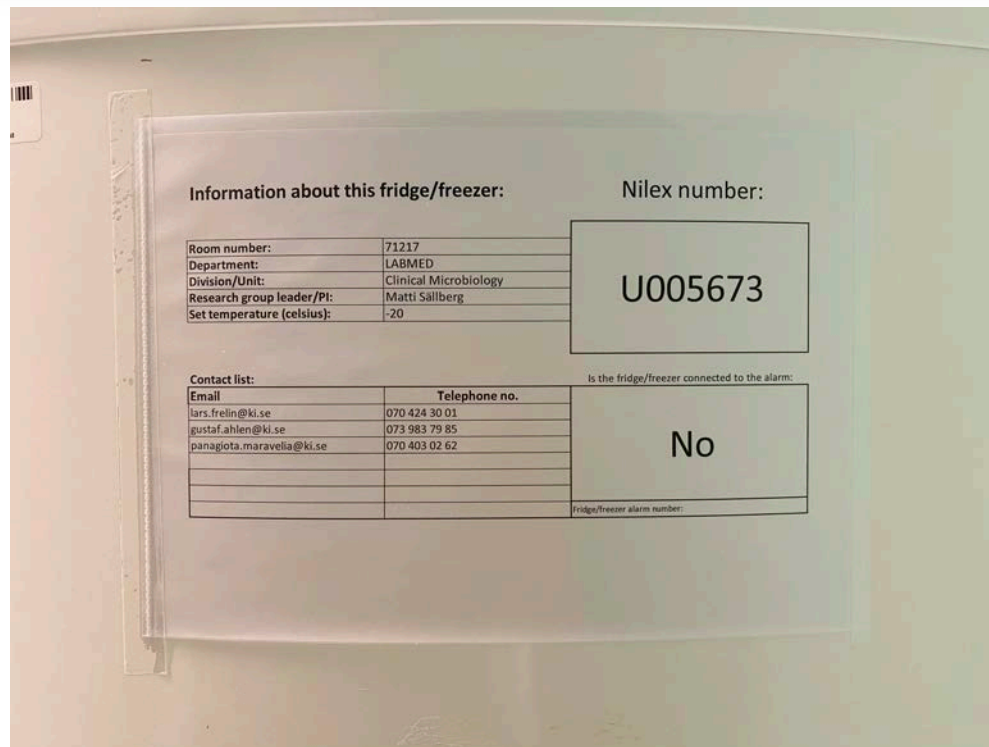


Common laboratories – ANA Futura

- We have a continuous discussion in the steering committee and drafting committee about the usage of ANA Futura common laboratories
- A lot of restructuring in common laboratories is ongoing to obtain more efficient usage of our premises
- All changes are discussed and suggested within the drafting committee and decided by the steering committee
- Meetings with "common lab coordinators/responsible persons" is performed twice yearly to discuss questions related to the common labs



- **Remember to label your fridges and freezers**
 - In case something happens to your fridges/freezers it is easier to reach out
 - Important for inventory of fridges/freezers in common premises
 - Template is to be found on the ANA Futura webpage



Information about this fridge/freezer:

Room number:	71217
Department:	LABMED
Division/Unit:	Clinical Microbiology
Research group leader/PI:	Matti Sällberg
Set temperature (celsius):	-20

Nilex number:

U005673

Contact list:

Email	Telephone no.
lars.frelin@ki.se	070 424 30 01
gustaf.ahlen@ki.se	073 983 79 85
panagiota.maravelia@ki.se	070 403 02 62

Is the fridge/freezer connected to the alarm:

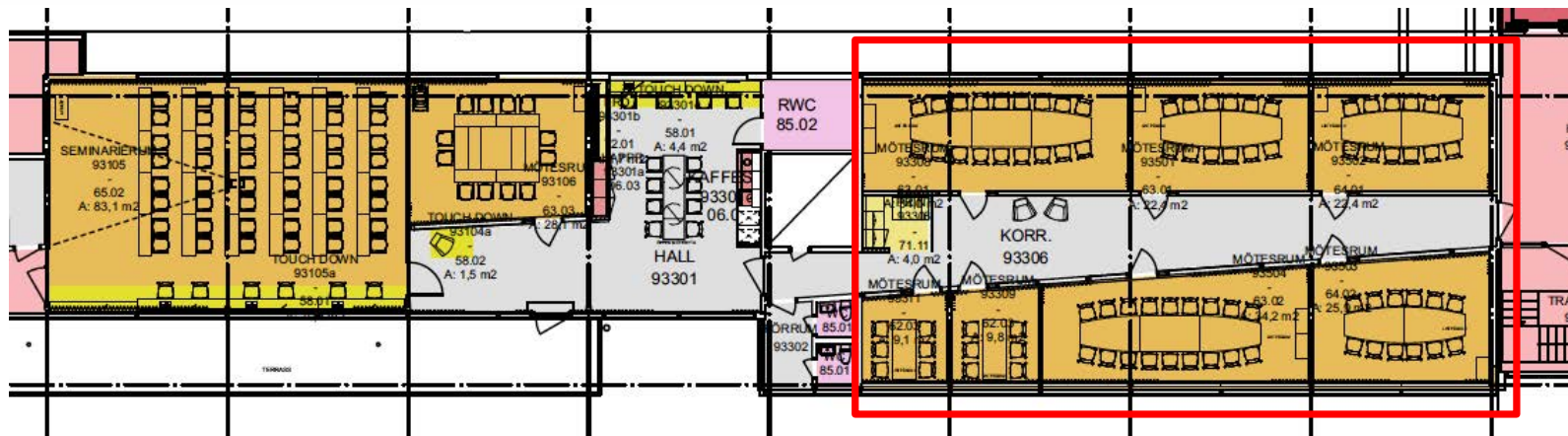
No

Fridge/freezer alarm number:



Meeting rooms level 4 and 9 in ANA Futura

- The steering committee ANA Futura decided that meeting rooms: Lagerlöf (floor 4, in the library), von Bering and Steinmann (floor 9) should be converted to a KI common premise. KI central facility management will decide. More information will be communicated when available



- The decision was based on the utilization rate of the rooms and feedback from the ANA Futura drafting committee

- **Myriam Aouadi (MedH/CIM): 7 staff**

- Research focus: Immuno-metabolism



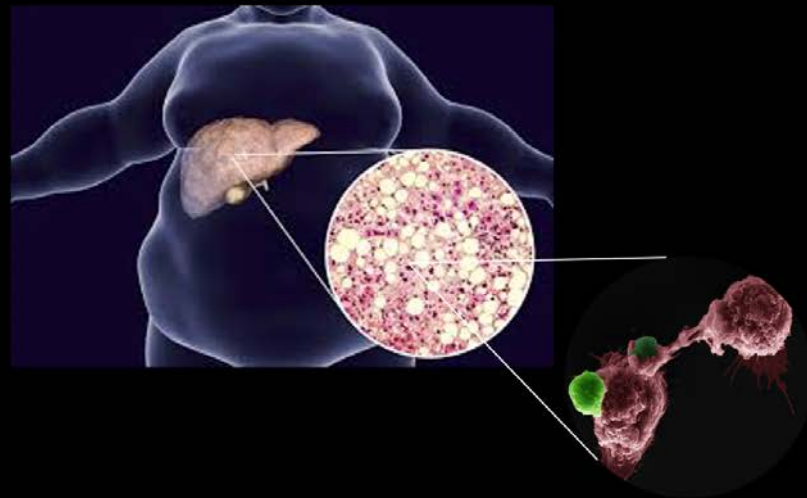
- **Jaakko Patraka (Labmed/Pathology):
6 staff**

- Research focus: Renal glomerulus biology and diseases



Immuno-Metabolism

Macrophages in metabolism & Metabolism in Macrophages



Center for Infectious Medicine
MedH
Karolinska Institutet
aouadilab.com



Aouadi Lab

Postdoctoral fellows



Valerio Azzimato, PhD



Cecilia Morgantini, MD PhD

PhD Students



Emelie Barreby



Achilleas Fardellas

Research Assistant



Ping Chen, PhD



Sebastian Nock, PhD



Ana Vankova

Lab Manager



Laura Levi, PhD



Speaker: Anna Pasetto, managing director for the Pre-GMP facility, ANA Futura

Facility webpage:

<https://staff.ki.se/core-facility-for-campus-flemingsberg-pre-gmp>

Pre-GMP



Anna Pasetto
LabMed



Status update regarding the Pre-GMP facility

- **The facility is now hosting the following projects:**
 1. Harmonizing HQ plasmid production between pre-GMP and GMP sites. **KI internal user: Matti Sällberg/Gustaf Ahlén**
 2. Isolation of tumor and viral hepatitis-reactive TCRs from HCC patients and pre-clinical development of related TCR-T cells therapy. **KI internal user: Anna Pasetto**
 3. Biomedrex, COVID-19 and HIV-1 antiviral drug development. **External user: Theodor Pramer, Biomedrex**
 4. Large scale production/isolation and characterization of EVs for cancer cell therapy. **KI internal user: Evren Alici**



Service	*Usage time period	KI user	External user
Introduction to the facility and safety training	per person	1,500 sek	2,500 sek
Usage of 1 room (only basic equipment)	per year	180,000 sek	680,000 sek
Usage of 1 office seat	per year	50,000 sek	90,000 sek
Project update meeting (mandatory)	per month	1,000 sek	2,000 sek
Technical support (per user request)	per hour	1,000 sek	2,000 sek
Advanced equipment			
Usage of Milttenyi Prodigy	per month	5,000 sek	30,000 sek
Usage of Zetaview	per day	150 sek	250 sek
Usage of BioFlo 320	per month	1,500 sek	2,500 sek
Usage of KR2i Flow-filtration system	per week	100 sek	200 sek
Usage of Nucleocounter	per month	1,000 sek	2,000 sek

* the price is indicated for common usage time, but alterantive usage time periods can be discussed

**Speaker: Jonas Klingström, managing director
for the BSL3 facility, ANA Futura**

Facility webpage:

<https://staff.ki.se/bsl3-laboratory-at-ana-futura>



BSL3-lab ANA Futura

- Part of the **Karolinska Institutet BSL3 core facility**: Including Biomedicum, Solna and ANA Futura, Flemingsberg
- A resource for academia, health care and industry
- A facility designed for **safe handling and research on all types of BSL3-classified pathogens** and samples from patients with infectious diseases

We currently can handle:

- Patient samples for FACS sorting and most other applications*

*Exception: Propagation of virus only allowed for those viruses we have approval for (see below)

We will start with patient samples and then live viruses

Viruses we have permission to work with:

- Hantavirus, HIV, SARS-CoV-2, TBEV
- Flavivirus (all), submitted and soon approved.
- If there are any specific virus/bacteria you wish to work with, contact us!



BSL3 ANA Futura staff and steering group

Jonas Klingström, facility manager Jonas.Klingstrom@ki.se

Jagadeeswara Rao Muvva, assistant manager rao.muvva@ki.se

Jacob Michaelsson, FACS sorter facility manager Jakob.Michaelsson@ki.se

Johan Sandberg, Chairman of the BSL3 Steering group Johan.Sandberg@ki.se

Lars Frelin

Annika Karlsson

Ali Mirazimi

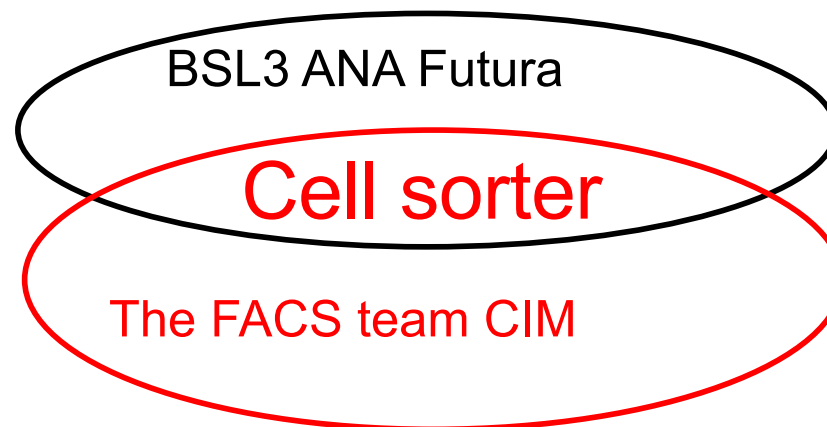
Sara Gredmark Russ

Piotr Novak

Service team ANA Futura

KI facility management

Akademiska hus



The BSL3 ANA Futura facility, equipment

- Equipment:
 - 3 Cell modules with totally
 - 5 Safety cabinets for cell-work
 - FACS sorting room
 - Ultracentrifuge (soon)
- Planned for:
 - Advanced (live) imaging
 - Sectioning/histology
- Smaller equipment planned:
 - ELISA-reader
 - Magpix
 - Fluorescence microscopy and camera
 - ELISPOT-reader

BSL3 ANA Futura, economy and fees

Responsible department: Department of Medicine Huddinge

We have KI core-facility support

Main cost: Rent

There will be two user fees for BSL3:

- Per hour of usage* and per entrance**

*600 SEK/hour

**Not decided yet, likely around 30 SEK per entrance

- Might be other solutions for regular users, incl possibility to rent space in the lab

Usage of FACS sorter:

- Included in the user fee for the BSL3 facility



Benefits of the facility:

The BSL3 facility at ANA Futura

- allow for research that has currently not been possible to perform at KI
- is fully equipped for cell work and have advanced equipment for further analysis
- is open for discussions regarding other equipment and help with projects

A unique aspect is the cell sorter:

One sorter inside BSL3 and one in BSL2

- Highly experienced FACS group with strong competence in sorting
- Training in BSL2 before starting in BSL3
- Can be used to sort cells from patients infected with BSL2/3-classified agents, including COVID-19 patients

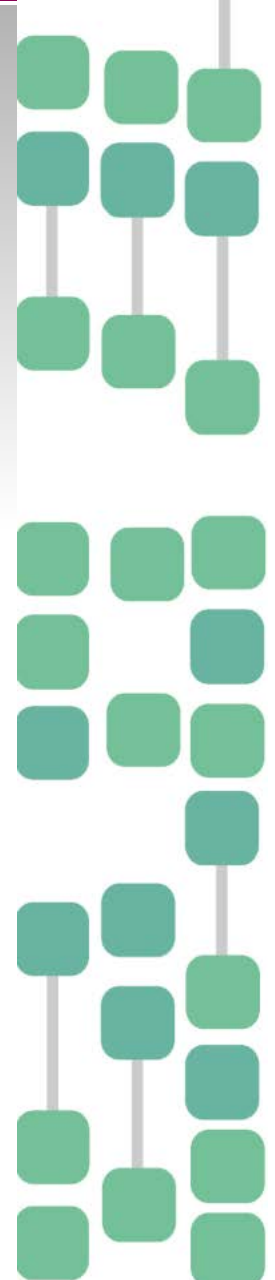


How to get access?

- Contact Jonas Klingström or any other in the steering group
- Access request form is available at the ANA Futura BSL3 webpage:
- <https://staff.ki.se/bsl3-laboratory-at-ana-futura>

Hope to see you in the BSL3-lab!

Please contact Jonas, Jagadeesh or any other involved if you have questions and/or are interested in the facility



**Speaker: Rasmus Larsson, coordinator /
technician, Service team ANA Futura**

Service team webpage:

<https://staff.ki.se/service-team-ana-futura>



Update from the Service team

ANA Futura Service Team

Common service

- Lab and office furniture planning, installation
- Card access administration
- Coffee machine service
- Emptying of recycling stations

Technical service

- Preventive maintenance, calibration and reparation of lab instruments
- Coordination of service agreements for common lab instruments
- Freezer facility maintenance

Laboratory Safety

- Support and coordination related to:
 - Chemical safety
 - Biosafety
 - Radiation safety
 - Fire safety
 - Waste management

Washing facility

- Sterilisation/autoclaving of glass ware, solutions, items.
- Distribution of clean goods to glass storages.

Goods & logistics

- Package receiving
- Lab equipment moving within ANA Futura

serviceteam.anafutura@ki.se
<https://staff.ki.se/service-team-ana-futura>



★ ANA Futura ★

